

**POWER QUEEN  
MANUAL**

# POWER QUEEN BATTERY CART

The POWER QUEEN combines economy, efficiency and maneuverability, to give you the power you need, when & where you need it.

## FEATURES:

- **ECONOMICAL & QUIET - NO MOTORS**
- **BUILT IN SOFT START CAPABILITY**
- **SAFETY - NO POWER CORDS NEAR AIRCRAFT**
- **CAPABLE OF STARTING JETS & TURBINES**
- **PORTABLE - NO CORDS**
- **USE IN HANGAR OR ON RAMP**
- **SEPARATE BATTERY CHARGER (may be used to charge any 24 volt battery in the aircraft or shop)**
- **0 to 50 VOLT METER (to measure status of charge in batteries)**
- **BATTERY HEATER AVAILABLE (added cost)**

The POWER QUEEN is a 14 or 28.5 volt, 672AH unit for all day power in hangar, or multiple engine starts before charging. This unit supplies in excess of 1500 amp momentary for aircraft starting. This is adequate for most aircraft.

(1)

## **POWER QUEEN BATTERY CART**

### **OPERATING INSTRUCTIONS**

#### **TO CHARGE BATTERY CART BATTERIES:**

- 1. Plug battery charger into battery cart receptacle**
- 2. Turn battery charger timer to the desired charge time.  
Battery charger red light should light.**
- 3. Overcharging of battery increases water requirements and shortens  
battery life and capacity.**

**CAUTION:        BATTERIES GENERATE HYDROGEN WHILE  
                         BEING CHARGED.**

**WHEN BATTERY VOLTAGE GAUGE  
INDICATES 25 VOLTS OR LESS, DO NOT  
ATTEMPT AIRCRAFT ENGINE START.**



(2)

**OPERATING INSTRUCTIONS (CONTINUED)**

**SERVICING BATTERIES:**

1. Visually check each cell for water. If water is visible, do not add water at this time.
2. Charge batteries until all cells read 1.265 specific gravity.
3. Adjust water level.
4. Wash inside of cart with soda solution after servicing.

**NOTE: CHECK BATTERY WATER LEVEL EVERY 50 CHARGES.**

(3)

**POWER QUEEN**  
**PARTS LIST**

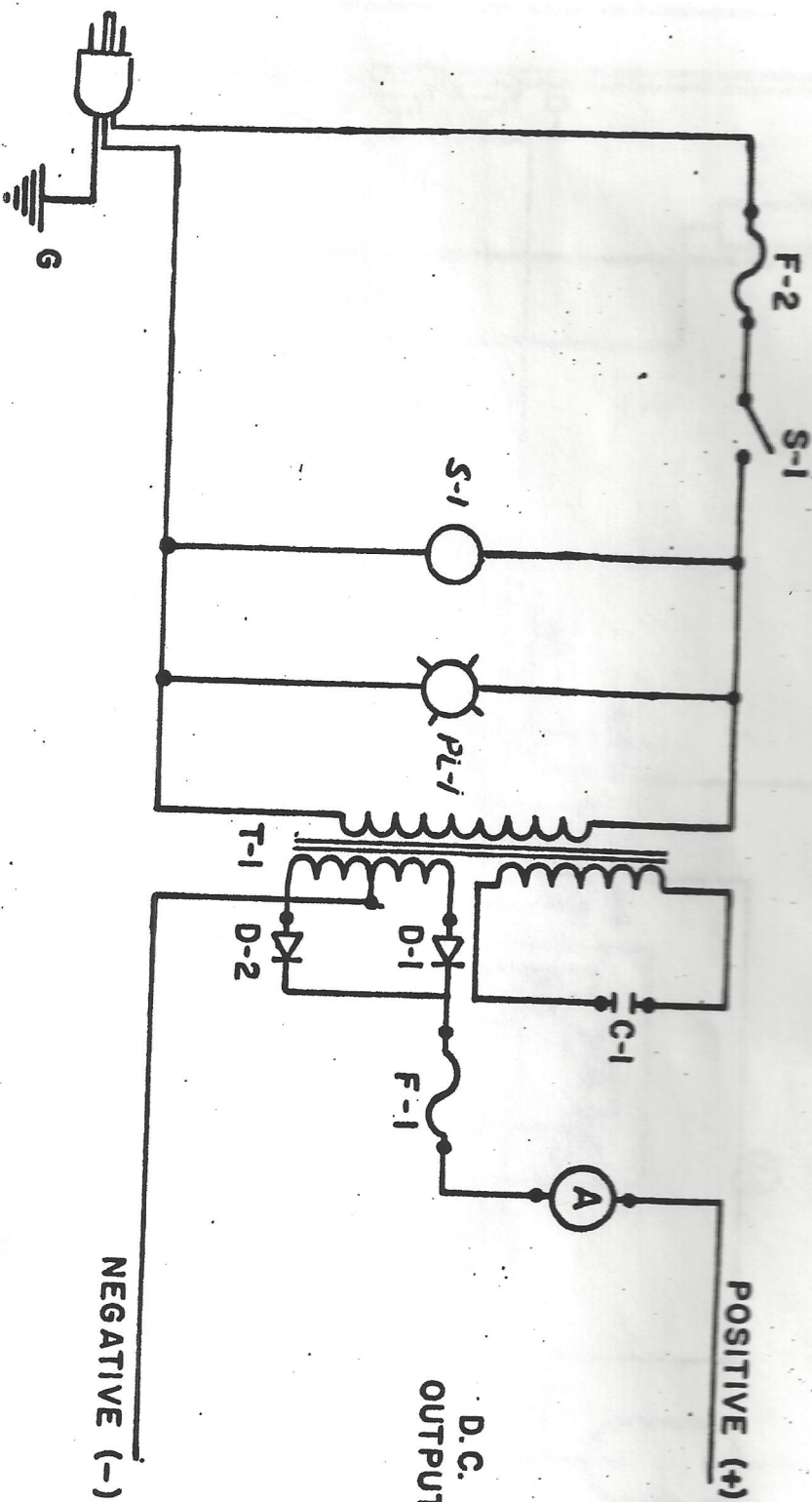
<u>PART</u> <u>NUMBER</u>	<u>PART</u>	<u>QUANTITY</u>
PQC11	CASE / COVER	1
PQB13	CASE / BACK	1
PQFT12	CASE / FRONT	1
PQS09	CASE / SIDES	1
PQFR10	CASE / FRAME	1
PQH16	CASE / HANDLE	1
PQCA25	CASTERS	2
PQW23	WHEELS	2
PQWRR21	WHEEL RETAINING RINGS	2
PQDC95	DC CABLE - 20 FT.	1
PQDC96	DC CABLE - 50 FT.	1
PQDUAL	DC PLUG ASSEMBLY	1
PQDCRE	DC CABLE END - 28 VOLT	1
PQECF	ELCON - FEMALE	1
PQECM	ELCON - MALE	1
PQ14VP	PLUG - 14 VOLT	2
PQOR	RELAY	1
PQLPQ100	LABEL	3
PQL47	LIGHT (RED)	1
PQMD30	METER (DC)	1
PQPSW	SWITCH - ON/OFF	1

**POWER QUEEN PARTS LIST (continued)**

<b><u>PART NUMBER</u></b>	<b><u>PART</u></b>	<b><u>QUANTITY</u></b>
PQ4VB	BATTERY - 4 VOLT	1
PQ12VB	BATTERY - 12 VOLT	2
PQ4VR	RETAINING BARS - 4 VOLT	2
PQPBC	BATTERY CONNECTOR (+)	3
PQNBC	BATTERY CONNECTOR (-)	3
PQBC	BATTERY CABLES	1 SET
PQBAC	BATTERY CHARGER	1
PQDC0/0	EXTRA LENGTH DC CABLE - 0/0	
PQSHCR	SHIPPING CRATE	



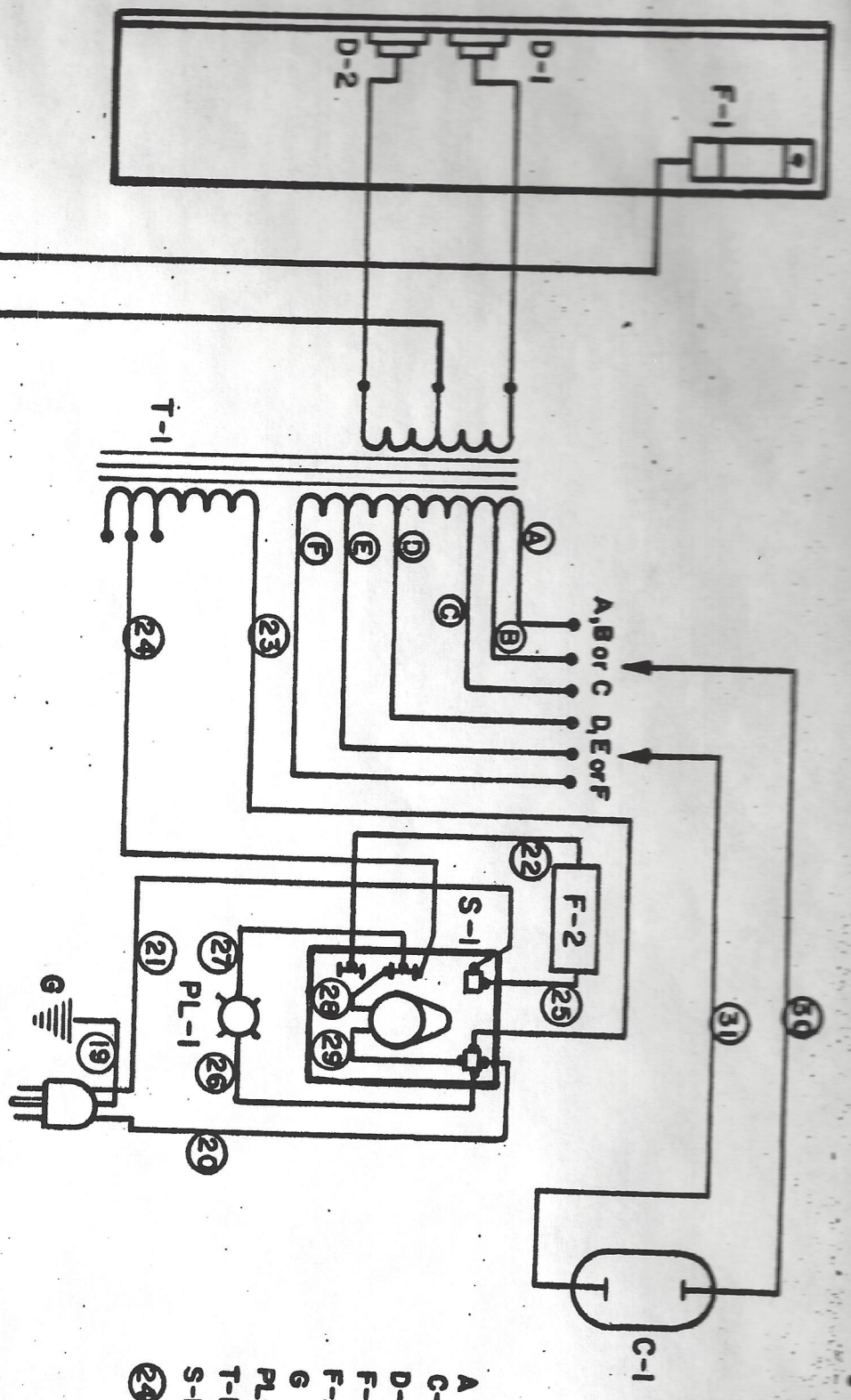
FL 1004



**SCHEMATIC SINGLE PHASE  
BATTERY CHARGER**

AMG & ASSOCIATES  
87B NORTHLOWRY  
SMYRNA, TN 37167

PHONE: (615) 459-7280 // FAX: (615) 459-7683



- KEY**
- A AMMETER
  - C-1 CAPACITOR
  - D-1,2 RECTIFIER
  - F-1 D.C. FUSE
  - F-2 A.C. FUSE
  - G GROUND
  - PL-1 PILOT LIGHT
  - T-1 TRANSFORMER
  - S-1 TIMER SWITCH
  - ②④ WIRE NUMBER

**WIRING DIAGRAM-SINGLE PHASE  
BATTERY CHARGER 115 VOLT**

AMG & ASSOCIATES  
87B NORTH LOWRY  
SMYRNA, TN 37167

PHONE: (615) 459-7280 // FAX: (615) 459-7683

POSITIVE (+)  
NEGATIVE (-)



