

as a guide during removal, disassembly, assembly, and installation. When installing an inside door handle, locate it in the same relative position as the opposite door handle.

**3-18A. ADJUSTMENT OF DOOR LATCH - ALL MODELS - 1966 AND ON.** Adjustment of latch or clutch cover is afforded by oversize and/or slotted holes. This adjustment ensures sufficient gear-to-bolt engagement and proper alignment.

#### NOTE

Lubricate door latch per Section 2. No lubrication is recommended for the rotary clutch.

**3-18B. DOOR LOCK.** Standard equipment on 100-Series aircraft includes, in addition to interior locks, a cylinder and key type lock on the left door. If the lock is to be replaced, the new one may be modified to accept the original key. This is desirable, as the same key is used for the ignition switch and the cabin door lock. After removing the old lock from the door, proceed as follows:

- a. Remove lock cylinder from new housing.
- b. Insert original key into new cylinder and file off any protruding tumblers flush with cylinder. Without removing key, check that cylinder rotates freely in housing.
- c. Install lock assembly in door, and check lock operation with door open.
- d. Destroy new key and disregard code number on cylinder.

#### **3-19. BAGGAGE AND LITTER DOORS.**

**3-19A.** Beginning in 1967, a litter loading door may be installed on the Models 180 and A185 as optional equipment. When the baggage door and litter door are opened, a single opening is available through the side of the fuselage to permit loading of a stretcher without removing the cabin door. When closed and latched, the forward part of the litter door becomes a structural member of the fuselage. The aircraft should not be flown until the litter door and baggage door are both closed and latched.

**3-20. REMOVAL AND INSTALLATION.** Baggage door removal is accomplished by disconnecting the door stop, then removing hinge pins or bolts securing door to hinges. The litter door may be removed after the piano hinge pin has been removed.

**3-21. SEATS.** (See figures 3-6 thru 3-13.)

**3-22. INDIVIDUAL SEATS.** Standard individual seats are equipped with manually operated reclining seat backs. Rollers permit the seats to slide fore-and-aft on seat rails, and pins which engage various holes in seat rails lock seats in the selected positions. Seat stops limit travel. Removal is accomplished by removing the seat stops, and sliding the seats forward and aft to disengage them from the seat rails. Be sure to replace seat stops after installing a seat.

## **WARNING**

It is extremely important that the pilot's seat stops are installed, since acceleration and deceleration could possibly permit the seat to become disengaged from the seat rails and create a hazardous situation, especially during take-off and landing.

Vertically adjustable individual seats, operated manually or by electrical power, may be installed in all airplanes except the Model 150. The Model 150 standard seat does not slide fore-and-aft. Removal is accomplished by unlatching the top of the seat back and releasing the spring-loaded pins at the bottom of the seat back. After removal of the seat back, the seat bottom can be pivoted at the forward pins for removal. The Model 150 optional reclining seat also slides fore-and-aft. Removal is similar to the other rail-mounted seats.

**3-23. TWO-PLACE SEATS.** Standard two-place seats consist of a double-width seat bottom, and either a double-width seat back or two single-width seat backs. The single-width seat backs recline separately. Removal is accomplished by removing the bolts which secure the seat bottom to the fuselage. Use care not to damage upholstery when removing seats. If desired, seat backs may first be removed from seat bottoms. Additional clearance may be obtained by removing one or more arm rests.

#### NOTE

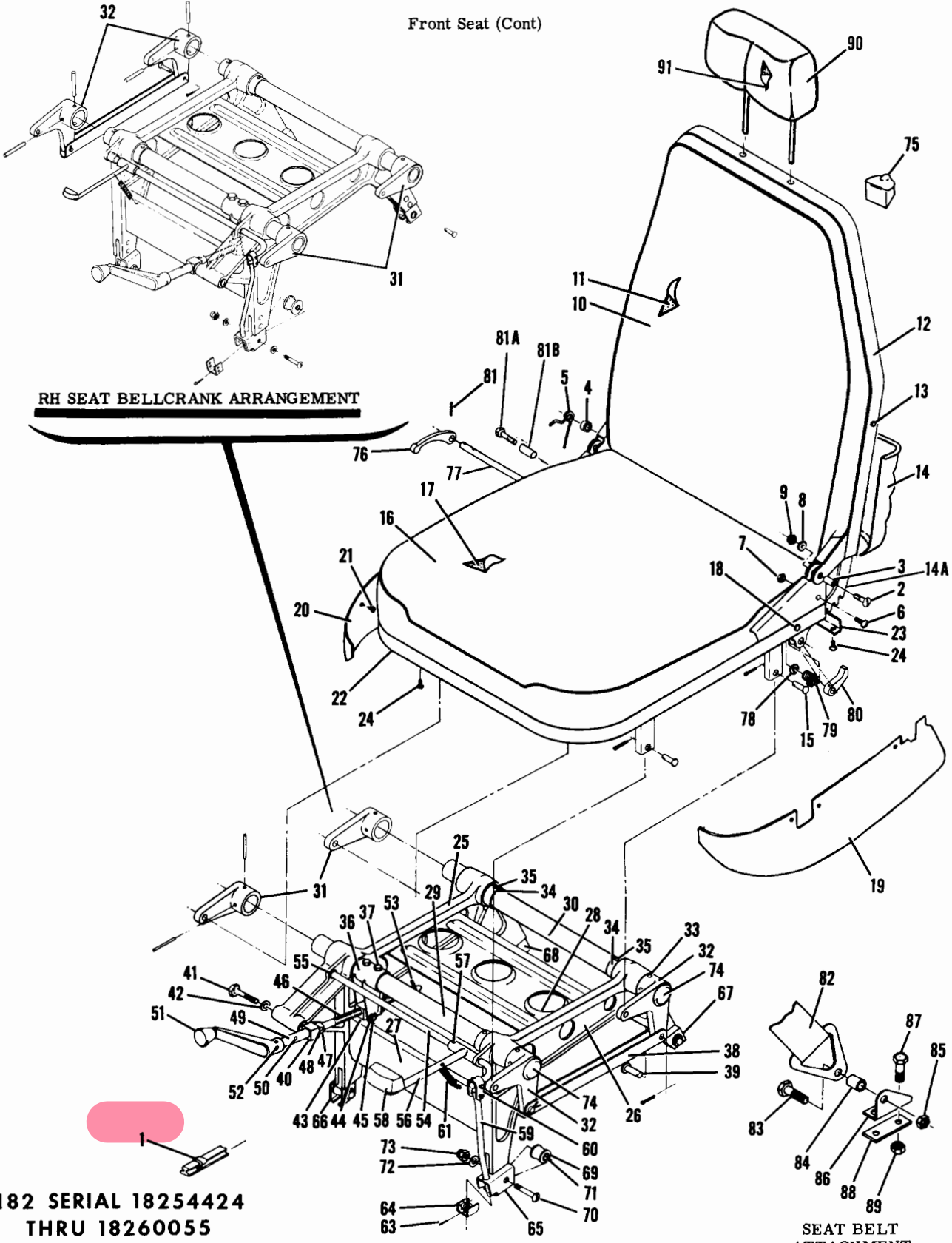
To help prevent upholstery damage, several thicknesses of waxed heavy paper (waxed is preferred) should be inserted between the seat and the side panel and arm rest during removal and installation of the seat.

**3-24. STOWABLE SEATS.** Stowable center and rear seats may be installed as optional equipment in the Model 180G and on, and in all Model 185 airplanes. The center stowable seat (prior to 1967) is removed by releasing the spring-loaded seat back catches and removing the eyebolts attaching the seat bottom to the fuselage. The rear stowable seat is removed by un-snapping the seat back and removing the seat bottom pivot bolts. The seat bottom also may be pivoted upward and snapped to the rear wall. Except for minor details, the rearmost stowable seat installation may be used on all models as an auxiliary seat.

Beginning in 1967 the center seat on optional six-place versions (Model 180 and 185) is divided into two individual seats, each of which is equipped with a removable seat back. Each seat is bolted to the cabin structure with hand-removable eyebolts. The seat is shown in figure 3-13.

**3-25. POWER SEATS.** Optional power seats for the pilot and copilot may be installed in all airplanes (prior to 1967) except the Model 150. An electric motor, geared to a screwjack actuator, operates the mechanism which raises and lowers the seat vertically. Fore-and-aft adjustment and seat back reclining adjustment are still accomplished manually.

Front Seat (Cont)



**RH SEAT BELLCRANK ARRANGEMENT**

**SEAT BELT ATTACHMENT**

**182 SERIAL 18254424  
THRU 18260055**

Figure 51A. Vertically Adjustable Seat Installation

FIGURE AND INDEX NO.	PART NUMBER	DESCRIPTION	UNITS PER ASSY	USABLE ON CODE
		<b>1 2 3 4 5 6 7</b>		
51A-		VERTICALLY ADJUSTABLE PILOT & CO-PILOT SEAT INSTALLATION -----	NP	A
	0700630-1 #	SEAT ASSEMBLY-VERTICALLY ADJUSTABLE L.H. -----	1	
	0700630-2 *#	SEAT ASSEMBLY-VERTICALLY ADJUSTABLE R.H. -----	1	B
	0700630-19 #	SEAT ASSEMBLY-VERTICALLY ADJUSTABLE RH -----	1	
- 1	0713074-1	STOP-SEAT -----	2	
	MS20392-1C21	PIN -----	2	
	MS24665-151	PIN-COTTER -----	2	
	0700630-206 #	BACK ASSEMBLY-UPHOLSTERED SEAT -----	1	J
	0700630-227 #	BACK ASSEMBLY-UPHOLSTERED SEAT -----	1	K
		ATTACHING PARTS		
- 2	AN23-16A	BOLT -----	2	
- 3	1414104-4	BUSHING -----	2	
- 4	0711668-1	BUSHING -----	2	
- 5	0711667-1	SPRING -----	2	
- 6	AN507-832R14	SCREW -----	2	
- 7	NAS679A08	NUT -----	2	
- 8	AN960-10L	WASHER -----	2	
- 9	S1914-8	NUT EN -----	2	
		-----*		
-10	0700678-9 #	COVER-SEAT BACK -----	1	
-11	1414100-9	CUSHION-SEAT BACK -----	1	
-12	1414110-1 □	TRIM ASSEMBLY-SEAT BACK -----	1	J
	0715001-1 □	TRIM ASSEMBLY-SEAT BACK -----	1	K
		ATTACHING PARTS		
-13	S102128-6C	SCREW -----	3	
		-----*		
-14	1414110-3 □	POCKET ASSEMBLY-MAGAZINE -----	1	J
	1715023-3 □	POCKET ASSEMBLY-MAGAZINE -----	1	K
	1414045-2	SPRING -----	1	K
-14A	1414111-5	CAM-SEAT BACK RECLINE -----	2	
	0700630-201 #	CUSHION ASSEMBLY-UPHOLSTERED SEAT BOTTOM -----	1	
	0700630-218 #	CUSHION ASSEMBLY-UPHOLSTERED SEAT BOTTOM -----	1	B
		ATTACHING PARTS		
-15	MS20392-2C17	PIN -----	4	
	MS24665-132	PIN-COTTER -----	4	
		-----*		
-16	0700678-10 #	COVER-SEAT BOTTOM -----	1	
-17	1414100-8	CUSHION-SEAT BOTTOM -----	1	
-18	AN23-15A	BOLT -----	2	
	MS21044N3	NUT -----	2	
-19	0700646-1 □	SKIRT-SEAT BOTTOM LH USED ON -1 & -19 SEAT ASSEMBLY -	1	
	1414263-7 □	SKIRT-SEAT BOTTOM LH USED ON -2 SEAT ASSEMBLY -----	1	B
-20	0700646-2 □	SKIRT-SEAT BOTTOM RH USED ON -1 & -19 SEAT ASSEMBLY -	1	
	1414263-8 □	SKIRT-SEAT BOTTOM RH USED ON -2 SEAT ASSEMBLY -----	1	B
		ATTACHING PARTS		
-21	S102126-4	SCREW -----	4	
		-----*		
-22	1414217-3	RETAINER -----	1	
-23	1414217-4	RETAINER -----	1	
-24	S102126-4	SCREW -----	14	
	0700631-5	FRAME ASSEMBLY-SEAT BOTTOM L.H. -----	1	
	0700631-5 □	FRAME ASSEMBLY-SEAT BOTTOM LH -----	1	E
	0700631-6	FRAME ASSEMBLY-SEAT BOTTOM R.H. -----	1	F
	0700631-6 □	FRAME ASSEMBLY-SEAT BOTTOM RH -----	1	E
-25	0700640-1	LEG-SEAT INBOARD L.H. -----	1	
	0700640-2	LEG-SEAT INBOARD R.H. -----	1	
-26	0700640-5	LEG-SEAT OUTBOARD L.H. -----	1	
	0700640-6	LEG-SEAT OUTBOARD R.H. -----	1	
-27	0700641-1	BRACE-FORWARD BULKHEAD WHEN EXHAUSTED USE 0700641-5 -	1	
	0700641-5	BRACE-FORWARD BULKHEAD -----	1	
-28	0700641-2	BRACE-UPPER BULKHEAD -----	1	
-29	0700639-1	TUBE-FORWARD TORQUE -----	1	
-30	0700639-2	TUBE-AFT TORQUE -----	1	
-31	0700633-2	BELLCRANK -----	2	
-32	0700633-4	BELLCRANK L.H. SEAT ONLY -----	2	
	0700633-1	BELLCRANK R.H. SEAT ONLY -----	2	
-33	NAS561P6-22	ROLL PIN -----	8	
-34	I200136-1	COLLAR -----	3	
-35	NAS561P6-18	ROLL PIN -----	3	

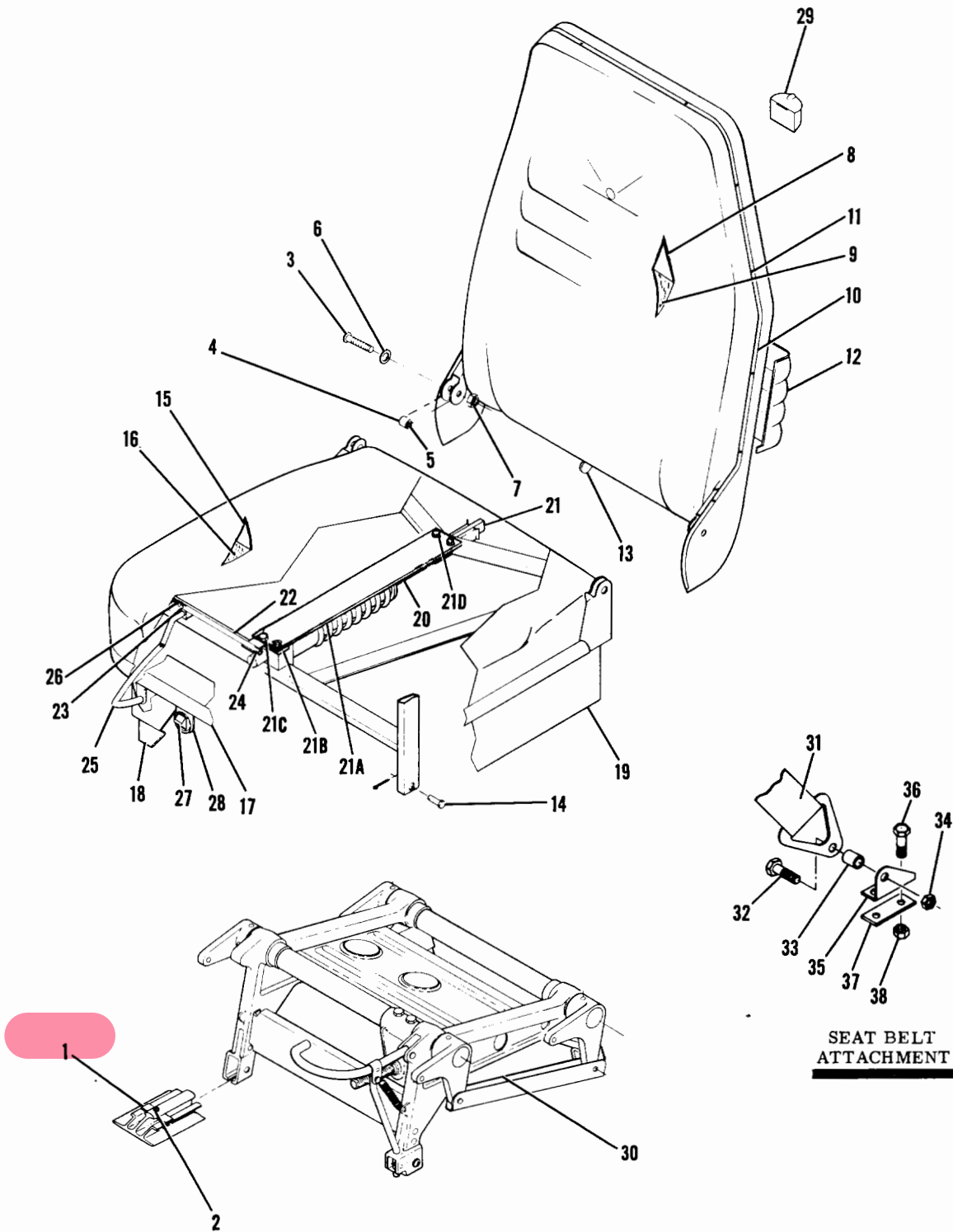
CONTINUED ON NEXT PAGE

FIGURE AND INDEX NO.	PART NUMBER	DESCRIPTION							UNITS PER ASSY	USABLE ON CODE	
		1	2	3	4	5	6	7			
51A-36	1200141-1									1	
	1200141-2									1	
-37	AN4-14A									2	
	NAS679A4									2	
-38	0700634-1									1	
-39	MS20392-2C17									2	
	MS24665-132									2	
-40	0700638-1									1	
-41	AN520-10RB									1	
-42	AN960-10L									1	
-43	1200139-1									1	
-44	AN960-10									1	
-45	MS20392-2C27									1	
	MS24665-132									1	
-46	1200155-1									1	
-47	1200138-1									1	
-48	NAS561P4-10									1	
-49	1200156-1									1	
-50	NAS561P4-8									1	
-51	1200159-1									1	
-52	NAS561P4-12									2	
-53	NAS561P4-10									1	
-54	0700642-1									1	
-55	AN960-616L									1	
	MS24665-5									1	
-56	0700643-1									1	
-57	NAS561P3-8									2	
-58	1200164-1									1	
	S102276-10									1	
-59	0700644-1									1	
-60	1414104-2									1	
	MS24665-134									2	
-61	1414116-1									1	
-62	AN960-416									1	
-63	MS24665-132									1	
-64	1414104-8									1	
-65	0700645-1									1	
-66	0700645-2									1	
-67	0700645-3									1	
-68	0700645-4									1	
-69	1414100-212									4	
-70	AN23-19A									1	
-71	1414104-10									1	
-72	AN960-10L									1	
-73	S1914-8									1	
-74	51045									2	
-75	S1957-2									1	
-76	0710312-2									1	
-77	1414104-1									1	
-78	AN960D616									2	
-79	1414107-1									1	
-80	0700636-1									2	

CONTINUED ON NEXT PAGE

FIGURE AND INDEX NO.	PART NUMBER	DESCRIPTION	UNITS PER ASSY	USABLE ON CODE
		<b>1 2 3 4 5 6 7</b>		
51A-81	NAS561C0-10	PIN -----	3	
-81A	AN23-19A	BOLT HANDLE STOP -----	1	
-81B	NAS43HT3-16	SPACER HANDLE STOP -----	1	
	MS21044N3	NUT HANDLE STOP -----	1	
-82	S1060-15	BELT ASSEMBLY-FRONT SEAT -----	2	C
	S1060-3	BELT ASSEMBLY-FRONT SEAT -----	2	D
	S1618C3	BELT ASSEMBLY-FRONT SEAT BLUE -----	2	G
	S1618D3	BELT ASSEMBLY-FRONT SEAT TAN -----	2	G
	S1618F3	BELT ASSEMBLY-FRONT SEAT OLIVE -----	2	G
	S1618H3	BELT ASSEMBLY-FRONT SEAT CORAL -----	2	G
	S1618J3	BELT ASSEMBLY-FRONT SEAT TAN -----	2	H
	S1618K3	BELT ASSEMBLY-FRONT SEAT RED -----	2	H
	S1618M3	BELT ASSEMBLY-FRONT SEAT AVACADD -----	2	H
	S1746D2	BELT ASSEMBLY-FRONT SEAT BLUE -----	2	H
	S1746J2	BELT ASSEMBLY-FRONT SEAT TAN -----	2	L
	S1746M2	BELT ASSEMBLY-FRONT SEAT RED -----	2	L
	S1746K2	BELT ASSEMBLY-FRONT SEAT BLUE -----	2	L
		BELT ASSEMBLY-FRONT SEAT AVACADD -----	2	L
		ATTACHING PARTS		
-83	AN3-4A	BOLT -----	2	
-84	NAS43HT4-22	SPACER -----	2	
-85	NAS679A4	NUT -----	2	
		---*---		
-86	0510205-1	FITTING-SEAT BELT INBOARD L.H. & OUTBOARD R.H. -----	2	
	0510205-2	FITTING-SEAT BELT OUTBOARD L.H. & INBOARD R.H. -----	2	
		ATTACHING PARTS		
-87	AN3-4A	BOLT -----	2	
-88	0710632-1	PLATE -----	2	
-89	MS21044N3	NUT -----	2	
		---*---		
	1414252-1	# HEADREST ASSEMBLY -----	2	J
	1714040-1	# HEADREST ASSEMBLY -----	2	K
	1714040-5	# HEADREST ASSEMBLY SKYLANE ONLY -----	2	K
-90	1414252-7	CUSHION-HEADREST -----	1	J
	1714035-1	CUSHION-HEADREST -----	1	K
-91	1414252-6	# COVER-HEADREST -----	1	J
	1714040-2	# COVER-HEADREST -----	1	K
	1714040-6	# COVER HEADREST SKYLANE ONLY -----	1	K
		NOTE. *THIS SEAT ASSEMBLY IS USED ONLY IN CONJUNCTION WITH POWER OPERATED PILOTS SEAT.		
		NOTE. #THIS PART MUST HAVE A SECOND DASH NUMBER ADDED TO DENOTE COLOR. REFER TO HOW TO ORDER UPHOLSTERED PARTS-PAGE XII.		
		NOTE. #THIS PART MUST HAVE A SECOND DASH NUMBER ADDED TO DENOTE COLOR. REFER TO HOW TO ORDER INTERIOR PARTS-PAGE XIII.		
		A---182 SERIAL 18254424 THRU 18260055 A182 SERIAL A182-0001 THRU A182-0116		
		B---182 SERIAL 18255238 THRU 18260055 A182 SERIAL A182-0001 THRU A182-0116		
		C---182 SERIAL 18254424 THRU 18255844		
		D---182 SERIAL 18255845 THRU 18256684		
		E---182 SERIAL 18256685 THRU 18260055 A182 SERIAL A182-0001 THRU A182-0116		
		F---182 SERIAL 18254424 THRU 18256684		
		G---182 SERIAL 18256685 THRU 18257625 A182 SERIAL A182-0001 THRU A182-0056		
		H---182 SERIAL 18257626 THRU 18258505 A182 SERIAL A182-0057 THRU A182-0096		
		J---182 SERIAL 18254424 THRU 18258505		
		K---182 SERIAL 18258506 THRU 18260055		
		L---182 SERIAL 18258506 THRU 18260055 A182 SERIAL A182-0097 THRU A182-0116		

Front Seat (Cont)



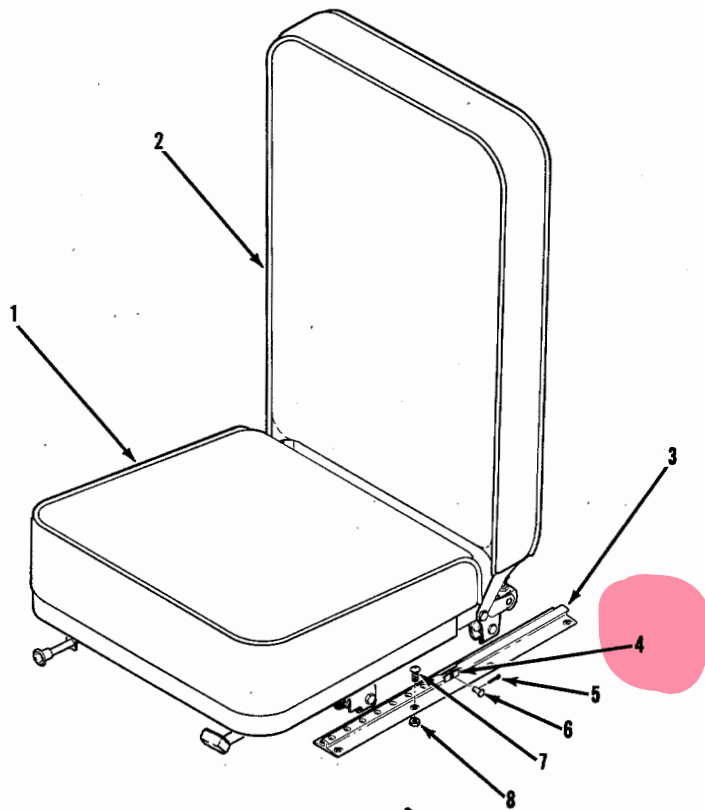
**182 SERIAL 18255238 THRU 18257625**

Figure 51B. Pilot & Co-Pilot Power Adjustable Seat Installation

FIGURE AND INDEX NO.	PART NUMBER	#	DESCRIPTION							UNITS PER ASSY	USABLE ON CODE
			1	2	3	4	5	6	7		
518-			PILOT & CO-PILOT POWER ADJUSTABLE SEAT INSTL. -----							NP	A
	1414265-9	#	SEAT ASSEMBLY-PILOT POWER VERTICALLY ADJUSTABLE -----							1	
	1414265-10	#	SEAT ASSEMBLY-CO-PILOT POWER VERTICALLY ADJUSTABLE -----							1	
			ATTACHING PARTS								
- 1	0511242		STOP-SEAT -----							4	
- 2	AN500A8-4		SCREW -----							4	
			-----*								
	1414265-207	#	BACK ASSEMBLY-UPHOLSTERED SEAT -----							1	
			ATTACHING PARTS								
- 3	AN23-16A		BOLT -----							2	
- 4	NAS43HT4-18		SPACER -----							2	
- 5	1414104-4		BUSHING -----							2	
- 6	AN960-10L		WASHER -----							2	
- 7	S1914-8		NUT EN -----							2	
			-----*								
- 8	0700114-44	#	COVER-SEAT BACK -----							1	
- 9	1414100-9		CUSHION-SEAT BACK -----							1	
-10	1414264-13	#	TRIM ASSEMBLY-SEAT BACK -----							1	
			ATTACHING PARTS								
-11	S1021Z8-6C		SCREW -----							AR	
			-----*								
-12	1414264-5	#	POCKET ASSEMBLY MAGAZINE -----							1	
-13	1414262-1	#	CAM-SEAT BACK RECLINE -----							1	
			ATTACHING PARTS								
	AN3-10A		BOLT -----							3	
	AN960-10L		WASHER -----							3	
	MS21044N3		NUT -----							3	
			-----*								
	1414265-209	#	CUSHION ASSEMBLY-UPHOLSTERED SEAT BOTTOM -----							1	
			ATTACHING PARTS								
-14	MS20392-2C17		PIN -----							4	
	MS24665-132		COTTER PIN -----							4	
			-----*								
-15	0700114-42	#	COVER-SEAT BOTTOM -----							1	
-16	1414265-8		CUSHION-SEAT BOTTOM -----							1	
-17	1414217-7		RETAINER-SEAT BOTTOM -----							1	
	1414217-3		RETAINER-SEAT BOTTOM -----							1	
			ATTACHING PARTS								
	S1021Z6-4		SCREW -----							12	
			-----*								
-18	1414263-5	#	SKIRT-SEAT LH -----							1	
-19	1414263-6	#	SKIRT-SEAT RH -----							1	
			ATTACHING PARTS								
	S1021Z6-4		SCREW -----							AR	
			-----*								
-20	1414266-1		ACTUATOR-SEAT BACK -----								
-21	1414261-1		STOP-SEAT BACK -----							2	
			ATTACHING PARTS								
	AN3-10A		BOLT -----							2	
	AN960-10L		WASHER -----							2	
	MS21044N3		NUT -----							2	
			-----*								
-21A	1514059-1		STIFFENER -----							1	
			ATTACHING PARTS								
-21B	1414269-1		SEAT STOP -----							1	
-21C	AN3-17A		BOLT -----							2	
	NAS43DD3-12		SPACER UNDER STIFFENER -----							2	
	NAS43DD3-3		SPACER BETWEEN ACTUATOR & FRAME -----							2	
-21D	AN3-13A		BOLT -----							2	
	AN960-10L		WASHER -----							2	
	MS21044N3		NUT -----							4	
			-----*								
-22	1414258-1		LINK -----							1	
			ATTACHING PARTS								
-23	MS20392-1C9		PIN -----							2	
	MS24665-132		COTTER PIN -----							2	
			-----*								
-24	1414259-1		SCREW -----							1	
-25	1414257-5		HANDLE ASSEMBLY -----							1	
			ATTACHING PARTS								
	MS24665-283		COTTER PIN -----							2	
			-----*								
-26	1200478-2		SPRING-HANDLE RETURN -----							1	

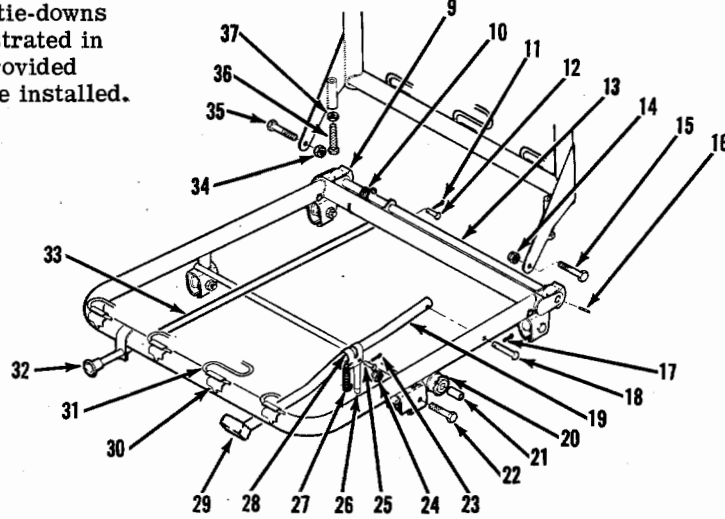
CONTINUED ON NEXT PAGE

FIGURE AND INDEX NO.	PART NUMBER	DESCRIPTION	UNITS PER ASSY	USABLE ON CODE
518-27 -28	1414268-1	SWITCH ASSEMBLY -----	1	
	1414267-1	BRACKET-SWITCH -----	1	
		ATTACHING PARTS		
	51021Z6-6	SCREW -----	2	
		---*---		
	0700719-1	COVER-FLOORBOARD TERMINAL -----	1	
-29	S1957-2	ASH RECEIVER -----	1	
-30	SEE FIG 51C	POWER SEAT BOTTOM ASSEMBLY-PILOT -----	1	
	SEE FIG 51C	POWER SEAT BOTTOM ASSEMBLY-CO-PILOT -----	1	
-31	S1524-2	BELT ASSEMBLY-SAFETY -----	1	B
	S1618D3	BELT ASSEMBLY-SAFETY TAN -----	1	C
	S1618J3	BELT ASSEMBLY-SAFETY RED -----	1	C
	S1618K3	BELT ASSEMBLY-SAFETY AVACADO -----	1	C
	S1618M3	BELT ASSEMBLY-SAFETY BLUE -----	1	C
		ATTACHING PARTS		
-32	AN3-4A	BOLT -----	2	
-33	NAS43HT4-22	SPACER -----	2	
-34	NAS679A4	NUT -----	2	
		---*---		
-35	0510205-1	FITTING-SEAT BELT INBOARD LH & OUTBOARD RH -----	2	
	0510205-2	FITTING-SEAT BELT OUTBOARD LH & INBOARD RH -----	2	
		ATTACHING PARTS		
-36	AN3-4A	BOLT -----	2	
-37	0710632-1	PLATE -----	2	
-38	MS21044N3	NUT -----	2	
		---*---		
<p>NOTE. #THIS PART MUST HAVE A SECOND DASH NUMBER ADDED TO DENOTE COLOR. REFER TO HOW TO ORDER UPHOLSTERED PARTS-PAGE XII.</p> <p>NOTE. #THIS PART MUST HAVE A SECOND DASH NUMBER ADDED TO DENOTE COLOR. REFER TO HOW TO ORDER INTERIOR PARTS-PAGE XIII.</p> <p>A---182 SERIAL 18255238 THRU 18257625                      A182 SERIAL A182-0001 THRU A182-0056                      B---182 SERIAL 18255238 THRU 18256684                      C---182 SERIAL 18256685 THRU 18257625                      A182 SERIAL A182-0001 THRU A182-0056</p>				



**NOTE**

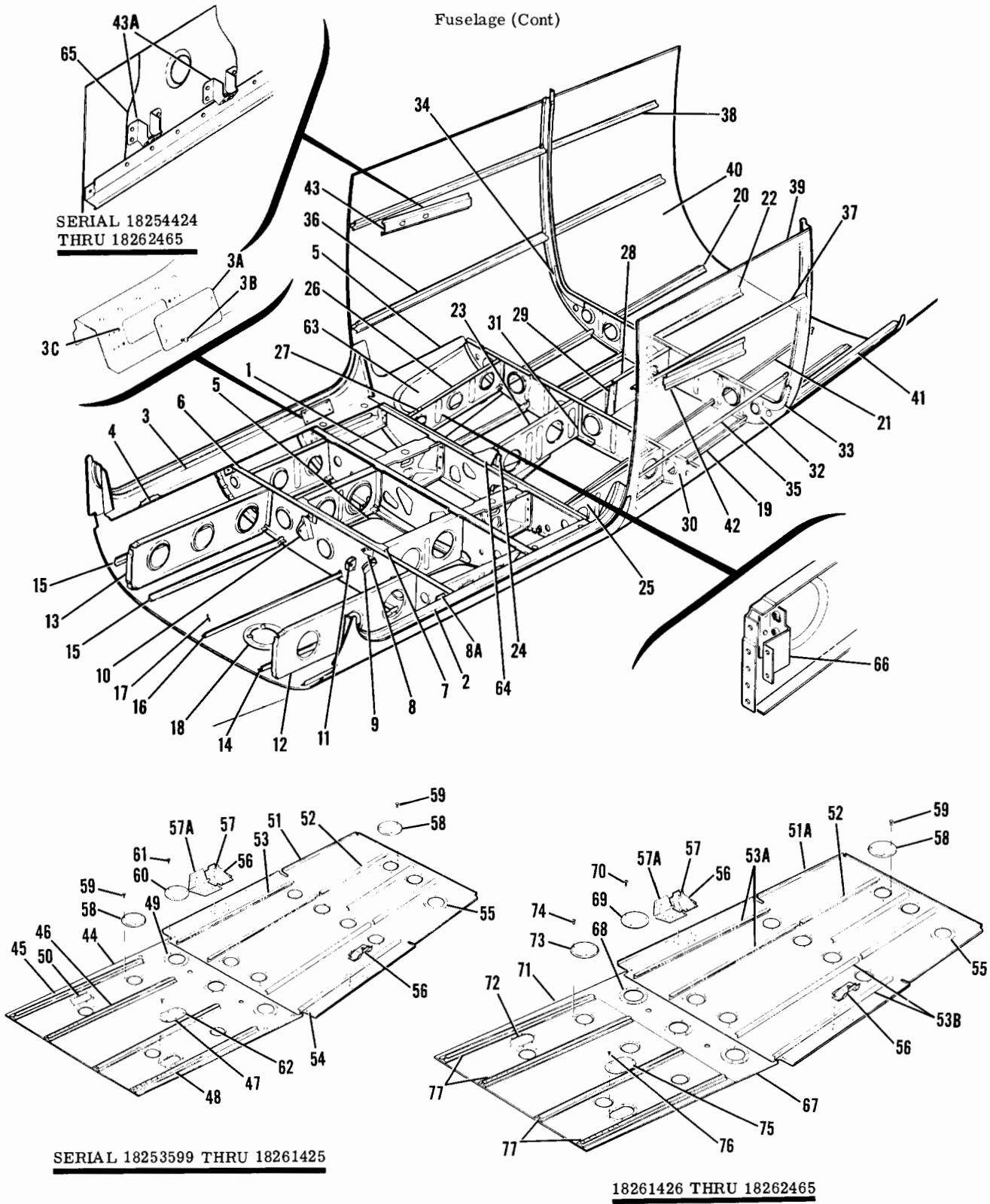
The baggage and cargo tie-downs for the Model 150, illustrated in figure 3-18, must be provided when reclining seats are installed.



- |                     |                          |                            |
|---------------------|--------------------------|----------------------------|
| 1. Seat Bottom      | 13. Shaft                | 26. Seat Adjustment Pin    |
| 2. Seat Back        | 14. Nut                  | 27. Spring                 |
| 3. Seat Rail        | 15. Bolt                 | 28. Seat Adjustment Clevis |
| 4. <b>Seat Stop</b> | 16. Roll Pin             | 29. Seat Adjustment Knob   |
| 5. Cotter Pin       | 17. Cotter Pin           | 30. Clip                   |
| 6. Clevis Pin       | 18. Clevis Pin           | 31. Seat Spring            |
| 7. Screw            | 19. Seat Adjustment Tube | 32. Seat Reclining Knob    |
| 8. Nut              | 20. Roller               | 33. Seat Reclining Tube    |
| 9. Cam              | 21. Bushing              | 34. Nut                    |
| 10. Spring          | 22. Bolt                 | 35. Bolt                   |
| 11. Cotter Pin      | 23. Cotter Pin           | 36. Bolt                   |
| 12. Clevis Pin      | 24. Nut                  | 37. Nut                    |
|                     | 25. Clevis Pin           |                            |

Figure 3-7. Reclining Seats (Model 150)

Fuselage (Cont)



182 SERIAL 18253599 THRU 18262465

Figure 25. Lower Cabin Section Assembly

FIGURE AND INDEX NO.	PART NUMBER	DESCRIPTION	UNITS PER ASSY							USABLE ON CODE	
			1	2	3	4	5	6	7		
25 -	0791160-3	LOWER CABIN SECTION ASSEMBLY -----	1							A	
	0791160-7	LOWER CABIN SECTION ASSEMBLY -----	1							C	
	0791160-9	LOWER CABIN SECTION ASSEMBLY -----	1							G	
	0791160-11	LOWER CABIN SECTION ASSEMBLY -----	1							J	
	0791160-16	LOWER CABIN SECTION ASSEMBLY -----	1							AA	
		LOWER CABIN SECTION ASSEMBLY -----	1								Z
	- 1	SEE FIG 26	BULKHEAD ASSEMBLY-LANDING GEAR STA 45.00 TO STA 65.33 ---	1							N
		SEE FIG 26A	BULKHEAD ASSEMBLY-LANDING GEAR STA 45.00 TO STA 65.33 ---	1							P
	- 2	0710705-1	SHIM-DOUBLER TO SKIN STA 65.33 1 LH & 1 RH -----	2							S
		0710606-1	SILL ASSEMBLY-LOWER CABIN DOOR LH -----	1							AB
	- 3	0710606-9	SILL ASSEMBLY-LOWER CABIN DOOR LH -----	1							W
		0710606-2	SILL ASSEMBLY-LOWER CABIN DOOR RH -----	1							AB
	- 3A	0710606-10	SILL ASSEMBLY-LOWER CABIN DOOR RH -----	1							W
		0710606-7	COVER -----	1							AB
			ATTACHING PARTS								
	- 3B	AN515-8R5	SCREW -----	4							AB
	- 3C	NAS682A08	NUTPLATE -----	4							AB
		-----*									
- 4	0710612-4	SUPPORT-LOWER DOOR SILL RH -----	1							AB	
	0710612-6	SUPPORT-LOWER DOOR SILL RH -----	1							W	
	0710612-3	SUPPORT-LOWER DOOR SILL LH -----	1							AB	
	0710612-5	SUPPORT-LOWER DOOR SILL LH -----	1							W	
- 5	0710600-3	DOUBLER-FUSELAGE CENTER SECTION -----	1							AB	
	0710700-5	DOUBLER-FUSELAGE CENTER SECTION -----	1							W	
- 6	0710610-1	BULKHEAD ASSY-STA 45.0 WEU 0710610-4 -----	1							L	
	0710610-4	BULKHEAD ASSY-STA 45.0 -----	1							R	
	0710610-7	BULKHEAD ASSY-STA 45.0 -----	1							P	
- 7	0710610-3	REINFORCEMENT-STA 45.00 BULKHEAD -----	1							L	
	0710610-6	REINFORCEMENT-STA 45.0 -----	1							K	
- 8	0710613-1	SUPPORT-SAFETY BELT FITTING -----	2								
	0710656-1	SUPPORT ASSY-LH -----	1							K	
- 8A	0710656-2	SUPPORT ASSY-RH -----	1							K	
	NAS698A3	NUTPLATE -----	1								
	NAS697A3	NUTPLATE -----	4							K	
	NAS680A3	NUTPLATE -----	2							R	
	0710657-1	SUPPORT -----	1							K	
	0710657-2	BRACE -----	1							K	
	0713702-1	CLIP-BRAKE LINE SUPPORT LH SIDE ONLY -----	1							P	
	0712638-2	BRACKET-UP ELEVATOR PULLEY LH -----	1								
	0712639-3	BRACKET-DOWN ELEVATOR PULLEY RH -----	1								
			ATTACHING PARTS								
	AN3-3A	BOLT -----	1								
	MS21044N3	NUT -----	1								
		-----*									
-11	0412467	BRACKET-ELEVATOR TAB CONTROL PULLEY -----	1								
-12	0710617-1	LONGITUDINAL BULKHEAD-LH -----	1							AB	
	0710702-1	LONGITUDINAL BULKHEAD-LH -----	1							W	
-13	0710617-2	LONGITUDINAL BULKHEAD-RH -----	1							AB	
	0710702-2	LONGITUDINAL BULKHEAD-RH -----	1							W	
-14	0710614-1	STRINGER-LH -----	2							AB	
	0710703-1	STRINGER-INBOARD LH -----	1							W	
-15	0710703-3	STRINGER-OUTBOARD LH -----	1							W	
	0710614-2	STRINGER-RH -----	2							AB	
-16	0710703-2	STRINGER-INBOARD RH -----	1							W	
	0710703-4	STRINGER-OUTBOARD RH -----	1							W	
-17	0710614-5	STRINGER-CENTER LOWER -----	1								
-18	0710600-2	SKIN-CENTER SECTION -----	1							AB	
	0710700-2	SKIN-CENTER SECTION -----	1							W	
-19	S226-3	DOUBLER-INSPECTION PLATE -----	1								
	S225-1	PLATE-INSPECTION -----	1								
		ATTACHING PARTS									
	S1021Z8-6	SCREW -----	3								
	NAS395-14-3	NUT -----	3								
		-----*									
-19	0711600-15	STIFFENER-BELLY SKIN LH WHEN EXHAUSTED USE 0711688-3 ---	1							E	
	0711688-3	STIFFENER-BELLY SKIN LH -----	1							Y	
-20	0711688-11	STIFFENER-BELLY SKIN LH -----	1							W	
	0711600-16	STIFFENER-BELLY SKIN RH WHEN EXHAUSTED USE 0711688-4 ---	1							E	
	0711688-4	STIFFENER-BELLY SKIN RH -----	1							AC	
	0711688-12	STIFFENER BELLY SKIN RH -----	1							W	

CONTINUED ON NEXT PAGE

FIGURE AND INDEX NO.	PART NUMBER	DESCRIPTION	UNITS PER ASSY	USABLE ON CODE
25 -21	0711600-13	STRINGER-BELLY LH WHEN EXHAUSTED USE 0711688-1 -----	1	E
	0711688-1	STRINGER-BELLY LH -----	1	Y
	0711688-17	STRINGER ASSY-BELLY LH -----	1	W
-22	0711600-14	STRINGER-BELLY RH WHEN EXHAUSTED USE 0711688-2 -----	1	E
	0711688-2	STRINGER-BELLY RH -----	1	Y
-23	0711688-18	STRINGER ASSY-BELLY RH -----	1	W
	0711614-1	BULKHEAD ASSY STA 65.33 TO 79.0 WEU 0711614-4 -----	1	L
	0711614-4	BULKHEAD ASSY STA 65.33 TO 79.0 -----	1	AC
-24	0711614-7	BULKHEAD ASSY STA 65.33 TO 79.0 -----	1	W
	0711614-3	BRACKET -----	1	L
	0711614-6	BRACKET -----	1	AC
-25	0711614-9	BRACKET -----	1	W
	NAS687A3K	NUTPLATE -----	1	AB
	0711613-1	BULKHEAD-OUTBOARD LH STA 65.33 TO STA 79.00 -----	1	AB
-26	0711613-5	BULKHEAD-OUTBOARD LH STA 65.33 TO STA 79.00 -----	1	W
	0711613-2	BULKHEAD-OUTBOARD RH STA 65.33 TO 79.0 WEU 0711613-4-----	1	L
	0711613-4	BULKHEAD-OUTBOARD RH STA 65.33 TO 79.0 -----	1	AC
-27	0711613-6	BULKHEAD-OUTBOARD RH STA 65.33 TO 79.0 -----	1	W
	NAS680A4	NUTPLATE -----	2	
	0711635-1	BULKHEAD ASSY-SEAT SUPPORT WEU 0712759-5 -----	1	L
-28	0712759-5	BULKHEAD ASSY-SEAT SUPPORT -----	1	K
	0711646-1	BRACKET ASSEMBLY -----	1	L
	NAS1068A4	NUTPLATE -----	1	
-29	0712758-1	BRACKET ASSY -----	1	K
	NAS1068A4	NUTPLATE -----	2	
	0711611-2	BULKHEAD ASSEMBLY-STA 79.00 -----	1	
-30	0711647-1	DOUBLER -----	1	
-31	0712624-6	BULKHEAD-LOWER STA 92.00 -----	1	A
	0712624-11	BULKHEAD-LOWER STA 92.00 -----	1	C
	0711674-3	BULKHEAD-STA 92.0 -----	1	D
-32	0712640-3	STIFFENER ASSY -----	1	
-33	0712640-4	STIFFENER ASSY -----	1	
	MS21044N3	NUTPLATE -----	1	
	0711600-21	STRINGER-LOWER LH WHEN EXHAUSTED USE 0711688-5 -----	1	E
-34	0711688-5	STRINGER-LOWER LH -----	1	Y
	0711688-13	STRINGER-LOWER LH -----	1	W
	0711600-22	STRINGER-LOWER RH WHEN EXHAUSTED USE 0711688-6 -----	1	E
-35	0711688-6	STRINGER-LOWER RH -----	1	Y
	0711688-14	STRINGER-LOWER RH -----	1	W
	0711600-17	STRINGER-LH WHEN EXHAUSTED USE 0711688-7 -----	1	E
-36	0711688-7	STRINGER-LH -----	1	D
	0711600-18	STRINGER-RH WHEN EXHAUSTED USE 0711688-8 -----	1	E
	0711688-8	STRINGER-RH -----	1	D
-37	0711600-3	SKIN-LOWER STA 65.33 TO 92.00 -----	1	E
	0711675-4	SKIN-LOWER STA 65.33 TO 92.0 -----	1	D
	0711600-2	SKIN-LOWER STA 92.00 TO 110.00 -----	1	E
-38	0711800-3	SKIN-LOWER STA 92.0 TO 110.0 -----	1	D
	0711620-1	DOOR SILL-LOWER BAGGAGE -----	1	
	0711631-1	SUPPORT-ARM REST LH -----	1	A
-39	0711631-2	SUPPORT-ARM REST RH -----	1	A
	0700688-1	SUPPORT ASSEMBLY-ARM REST -----	4	B
	0791160-4	FLOORBOARD ASSEMBLY-CENTER -----	1	L
-40	0791160-15	FLOORBOARD ASSEMBLY-CENTER -----	1	X
	0710618-4	SEAT RAIL-OUTBOARD RH -----	1	L
	0710658-2	SEAT RAIL-OUTBOARD RH -----	1	X
-41	0710618-6	SEAT RAIL-INBOARD RH -----	1	L
	0710658-2	SEAT RAIL-INBOARD RH -----	1	X
	0710618-1	SEAT RAIL-INBOARD LH -----	1	L
-42	0716658-2	SEAT RAIL-INBOARD LH -----	1	X
	0710618-5	SEAT RAIL-OUTBOARD LH -----	1	L
	0710658-2	SEAT RAIL-OUTBOARD LH -----	1	X
-43	51209-1	DOUBLER ASSEMBLY-INSPECTION HOLE -----	3	
	NAS680A08K	NUTPLATE -----	6	
	0710634-1	DOUBLER ASSEMBLY-INSPECTION OPENING -----	2	
-44	NAS680A08K	NUTPLATE -----	6	

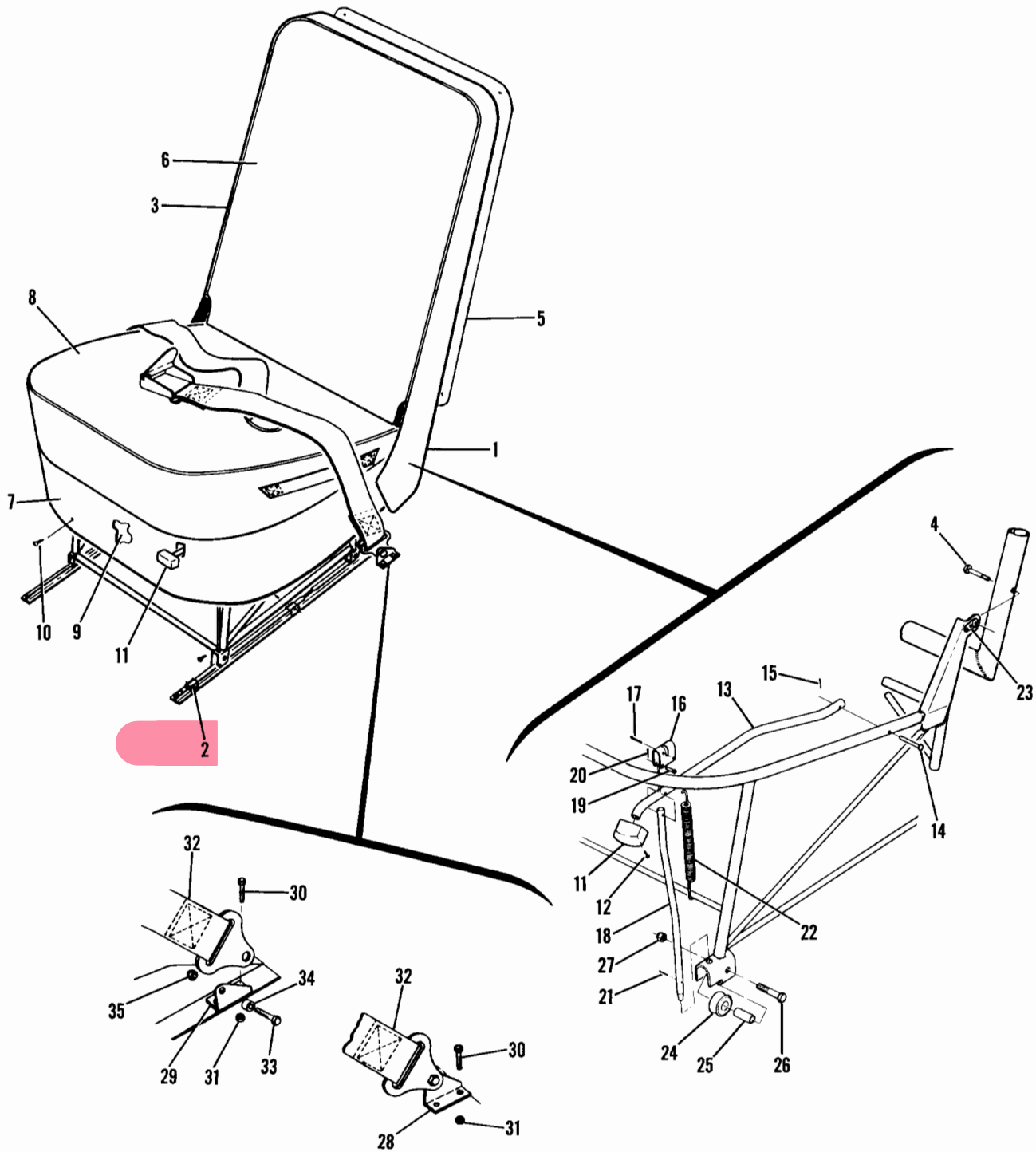
CONTINUED ON NEXT PAGE

FIGURE AND INDEX NO.	PART NUMBER	DESCRIPTION	UNITS PER ASSY	USABLE ON CODE
		<b>1 2 3 4 5 6 7</b>		
25 -51	0711608-1	FLOORBOARD ASSEMBLY-AFT CABIN -----	1	E
	0711608-6	FLOORBOARD ASSEMBLY-AFT CABIN -----	1	M
	0711608-8	FLOORBOARD ASSY-AFT CABIN -----	1	T
-51A	0711608-14	FLOORBOARD ASSY-AFT CABIN -----	1	U
-52	0711608-4	STRINGER -----	3	
-53	0711608-5	STRINGER -----	4	V
-53A	0711608-11	STRINGER-LH -----	2	W
-53B	0711608-12	STRINGER-RH -----	2	W
-54	S1862-1	NUTPLATE TIN -----	4	V
-55	S1209-1	DOUBLER ASSEMBLY -----	1	
-56	0711632-1	SUPPORT ASSY-REAR SEAT WEU 0711632-7 -----	2	L
	0711632-7	SUPPORT ASSY-REAR SEAT -----	2	K
-57	NAS1068A4	NUTPLATE-FLOATING -----	1	
-57A	0712665-2	DOUBLER-RH -----	1	K
	0712665-1	DOUBLER-LH -----	1	K
-58	S225-1	PLATE-INSPECTION COVER ----- ATTACHING PARTS	12	
-59	49330	STUD UC ----- ---*---	3	
-60	S225-7	PLATE-INSPECTION COVER ----- ATTACHING PARTS	3	
-61	AN515-8R7	SCREW ----- ---*---	6	
-62	0710633-1	COVER-INSPECTION OPENING ----- ATTACHING PARTS	2	
	AN515-8R7	SCREW ----- ---*---	6	
-63	0710600-6	DOUBLER-BELLY RH -----	1	
	0710600-7	DOUBLER-BELLY LH -----	1	
-64	0711642-1	DOUBLER-SEAT ATTACHMENT -----	1	Y
	0711642-2	DOUBLER-SEAT ATTACHMENT -----	1	W
-65	0711690-2	REINFORCEMENT PLATE-RH -----	1	F
	0711690-4	REINFORCEMENT PLATE-RH -----	1	G
	0711690-6	REINFORCEMENT PLATE-RH -----	1	H
	0711690-1	REINFORCEMENT PLATE-LH -----	1	F
	0711690-3	REINFORCEMENT PLATE-LH -----	1	G
	0711690-5	REINFORCEMENT PLATE-LH -----	1	H
-66	0762045-1	BRACKET ASSY -----	1	Y
	0762045-3	BRACKET ASSY -----	1	W
	NAS1067N3	NUTPLATE -----	2	
-67	0710609-9	FLOORBOARD ASSY -----	1	U
-68	S1209-1	DOUBLER ASSY -----	3	
	NAS680A08K	NUTPLATE -----	6	
-69	S225-7	PLATE-COVER ----- ATTACHING PARTS	3	U
-70	AN515-8R6	SCREW ----- ---*---	6	U
-71	0710609-7	FLOORBOARD ASSY -----	1	U
-72	0710634-1	DOUBLER ASSY -----	2	
	NAS680A08K	NUTPLATE -----	6	
-73	S225-1	PLATE-COVER ----- ATTACHING PARTS	5	U
-74	S1878-1	STUD ----- ---*---	3	U
-75	0710633-1	PLATE-COVER ----- ATTACHING PARTS	2	U
-76	AN515-8R7	SCREW ----- ---*---	6	U
-77	0710658-2	SEAT RAIL -----	4	U

CONTINUED ON NEXT PAGE

FIGURE AND INDEX NO.	PART NUMBER	DESCRIPTION							UNITS PER ASSY	USABLE ON CODE
		1	2	3	4	5	6	7		
25 -		A	---	182	SERIAL	18253599	THRU	18254423		
		B	---	182	SERIAL	18254424	THRU	18262465		
				A182	SERIAL	A182-0001	& ON			
		C	---	182	SERIAL	18254424	THRU	18255058		
		D	---	182	SERIAL	18255059	THRU	18262465		
				A182	SERIAL	A182-0001	& ON			
		E	---	182	SERIAL	18253599	THRU	18255058		
		F	---	182	SERIAL	18254946	THRU	18255058		
		G	---	182	SERIAL	18255059	THRU	18257625		
				A182	SERIAL	A182-0001	THRU	A182-0056		
		H	---	182	SERIAL	18257626	THRU	18262465		
				A182	SERIAL	A182-0057	& ON			
		J	---	182	SERIAL	18257626	THRU	18260445		
				A182	SERIAL	A182-0057	THRU	A182-0136		
		K	---	182	SERIAL	18260446	THRU	18262465		
		L	---	182	SERIAL	18253599	THRU	18260445		
				A182	SERIAL	A182-0001	& ON			
		M	---	182	SERIAL	18255059	THRU	18260445		
				A182	SERIAL	A182-0001	& ON			
		N	---	182	SERIAL	18253599	THRU	18260825		
				A182	SERIAL	A182-0001	& ON			
		P	---	182	SERIAL	18260826	THRU	18262465		
		R	---	182	SERIAL	18260446	THRU	18260825		
				A182	SERIAL	A182-0137	& ON			
		S	---	182	SERIAL	18261145	THRU	18262465		
		T	---	182	SERIAL	18260445	THRU	18261425		
				A182	SERIAL	A182-0001	THRU	A182-0136		
		U	---	182	SERIAL	18261426	THRU	18262465		
				A182	SERIAL	A182-0137	& ON			
		V	---	182	SERIAL	18253599	THRU	18260825		
				A182	SERIAL	A182-0001	THRU	A182-0136		
		W	---	182	SERIAL	18260826	THRU	18262465		
				A182	SERIAL	A182-0137	& ON			
		X	---	182	SERIAL	18260446	THRU	18261425		
		Y	---	182	SERIAL	18255059	THRU	18260825		
				A182	SERIAL	A182-0001	THRU	A182-0136		
		Z	---	LOWER CABIN SECTION ASSEMBLY FOR 18260826 THRU 18262465 ARE NOT AVAILABLE. ORDER DETAIL PARTS FROM INDIVIDUALLY CODED ITEMS.						
		AA	---	182	SERIAL	18260446	THRU	18260825		
				A182	SERIAL	A182-0137	& ON			
		AB	---	182	SERIAL	18253599	THRU	18260825		
				A182	SERIAL	A182-0001	THRU	A182-0136		
		AC	---	182	SERIAL	18260446	THRU	18260825		
				A182	SERIAL	A182-0001	THRU	A182-0136		

Front Seat



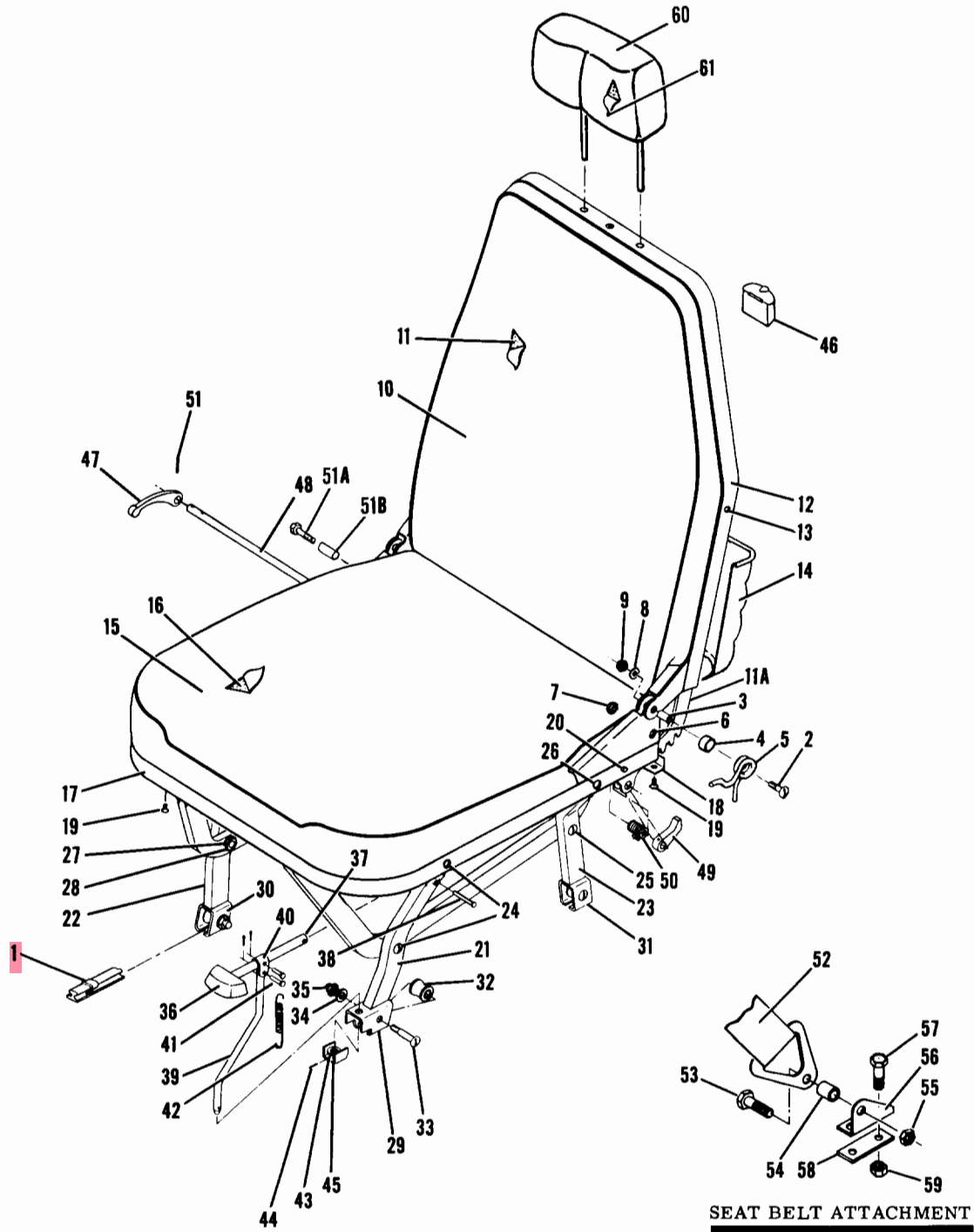
182 SERIAL 18253599 THRU 18254423

Figure 48. Front Seat Installation

FIGURE AND INDEX NO.	PART NUMBER	DESCRIPTION	UNITS PER ASSY	USABLE ON CODE
48 -		<b>1 2 3 4 5 6 7</b>		
- 1	0700659-1	SEAT INSTALLATION-FRONT ----- SEAT ASSEMBLY-FRONT ----- ATTACHING PARTS -----	NP 2	A
- 2	0713074-1 MS24665-151 MS20392-1C21	STOP-SEAT ----- PIN-COTTER ----- PIN-CLEVIS ----- -----*	2 2 2	
- 3	0700659-5	BACK ASSEMBLY-FRONT SEAT UPHOLSTERED ----- ATTACHING PARTS -----	1	
- 4	AN4-13A	BOLT ----- -----*	2	
- 5	0700105-425	PANEL ASSEMBLY-SEAT BACK -----	1	
- 6	0700659-9	COVER ASSEMBLY-SEAT BACK -----	1	
- 7	0700659-3	BOTTOM ASSEMBLY-FRONT SEAT UPHOLSTERED -----	1	
- 8	0700659-7	COVER ASSEMBLY-SEAT BOTTOM -----	1	
- 9	0500104-89	SKIRT ----- ATTACHING PARTS -----	1	
-10	S102124-6	SCREW ----- -----*	11	
-11	0700113-1	KNOB-SEAT LATCH HANDLE ----- ATTACHING PARTS -----	1	
-12	S102126-8	SCREW ----- -----*	1	
-13	0710316-2	HANDLE-SEAT LATCH ----- ATTACHING PARTS -----	1	
-14	MS20392-2C31	PIN-FLAT HEAD -----	1	
-15	MS24665-134	PIN-COTTER ----- -----*	1	
-16	0311644	CLEVIS ----- ATTACHING PARTS -----	1	
-17	MS24665-285	PIN-COTTER ----- -----*	1	
-18	0710304-3	PIN-SEAT LATCH ----- ATTACHING PARTS -----	1	
-19	MS20392-1C15	PIN-FLAT HEAD -----	1	
-20	MS24665-134	PIN-COTTER -----	1	
-21	MS24665-132	PIN-COTTER ----- -----*	1	
-22	0310196-16	SPRING -----	1	
-23	NAS682-A4	NUT PLATE ATTACH SEAT BACK -----	2	
-24	0311310	ROLLER ----- ATTACHING PARTS -----	4	
-25	0311586	BUSHING -----	1	
-26	AN3-11A	BOLT -----	1	
-27	MS21044N3	NUT ----- -----*	1	
-28	0510205-2	BRACKET-SAFETY BELT ATTACHMENT LH OUTBD & RH INBD -----	2	
-29	0510205-1	BRACKET-SAFETY BELT ATTACHMENT RH OUTBD & LH INBD ----- ATTACHING PARTS -----	2	
-30	AN3-4A	BOLT -----	2	
-31	MS21044N3	NUT -----	2	
	0710632-1	PLATE-SEAT BELT BRACKET ----- -----*	1	
-32	S1060-15	BELT ASSEMBLY-SEAT ----- ATTACHING PARTS -----	2	
-33	AN4-5A	BOLT -----	2	
-34	NAS43HT4-20	SPACER -----	2	
-35	NAS679A4	NUT ----- -----*	2	

A---182 SERIAL 18253599 THRU 18254423

Front Seat (Cont)



182 SERIAL 18254424 THRU 18258505

Figure 49. Pilot & Co-pilot Seat Installation

FIGURE AND INDEX NO.	PART NUMBER	DESCRIPTION	UNITS PER ASSY	USABLE ON CODE
49 -	0700678-2	# PILOT & CO-PILOT SEAT INSTALLATION ----- SEAT ASSEMBLY-PILOT & CO-PILOT ----- ATTACHING PARTS -----	NP 2	A
- 1	0713074-1 MS20392-1C21 MS24665-151	STOP-SEAT ----- PIN ----- PIN-COTTER ----- -----*	2 2 2	
	0700678-203	# BACK ASSEMBLY-UPHOLSTERED SEAT ----- ATTACHING PARTS -----	1	
- 2	AN23-16	BOLT -----	2	
- 3	1414104-4	BUSHING -----	2	
- 4	0711668-1	BUSHING -----	2	
- 5	0711667-1	SPRING -----	2	
- 6	AN507-832R14	SCREW -----	2	
- 7	NAS679A08	NUT -----	2	
- 8	AN960-10L	WASHER -----	2	
- 9	S1914-8	NUT EN ----- -----*	2	
-10	0700678-9	# COVER-SEAT BACK -----	1	
-11	1414100-9	CUSHION-SEAT BACK -----	1	
-11A	1414230-1	CAM-SEAT BACK RECLINE -----	2	C
	1414212-11	CAM-SEAT BACK RECLINE -----	2	B
-12	0715001-1	# TRIM-SEAT BACK ----- ATTACHING PARTS -----	1	
-13	S1021Z6-6C	SCREW ----- -----*	3	
-14	1715023-3	# POCKET ASSEMBLY-MAGAZINE -----	1	
	1414045-2	SPRING -----	1	B
	0700678-201	# BOTTOM ASSEMBLY-UPHOLSTERED SEAT -----	1	
-15	0700678-10	# COVER-SEAT BOTTOM -----	1	
-16	1414100-8	CUSHION-SEAT BOTTOM -----	1	
-17	1414217-2	RETAINER-SEAT BOTTOM -----	1	
-18	1414217-3	RETAINER-SEAT BOTTOM -----	1	
-19	S1021Z6-4	SCREW -----	14	
-20	AN23-15A MS21044N3	BOLT-SEAT BACK STOP ----- NUT -----	2 2	
-21	1414103-2	LEG ASSEMBLY-FORWARD L.H. -----	1	
-22	1414103-12	LEG ASSEMBLY-FORWARD R.H. -----	1	
-23	1414103-6	LEG-SEAT AFT ----- ATTACHING PARTS -----	2	
-24	AN24-13	BOLT-FORWARD LEG -----	2	
-25	AN24-13	BOLT-AFT LEG -----	1	
-26	AN24-16	BOLT-AFT LEG -----	1	
-27	AN936A416 AN936A616	WASHER ----- WASHER -----	2 2	
-28	1414112-1	NUT ----- -----*	2	
-29	1414104-39	HOUSING-SEAT ROLLER FORWARD L.H. -----	1	
-30	1414104-40	HOUSING-SEAT ROLLER FORWARD R.H. -----	1	
-31	1414104-41	HOUSING-SEAT ROLLER AFT L.H. -----	1	
	1414104-42	HOUSING-SEAT ROLLER AFT R.H. -----	1	
-32	1414100-212	KIT-SEAT ROLLER ----- ATTACHING PARTS -----	4	
-33	AN23-19A	BOLT -----	1	
-34	AN960-10L	WASHER -----	1	
-35	S1914-8	NUT EN ----- -----*	1	
-36	0700113-1 S1021Z6-8	KNOB-FORE & AFT SEAT ADJUSTMENT ----- SCREW -----	1 1	
-37	1414104-45	ARM-SEAT ADJUSTMENT ----- ATTACHING PARTS -----	1	
-38	MS20392-2C47 MS24665-132	PIN ----- PIN-COTTER ----- -----*	1 1	
-39	1414104-46	PIN-SEAT ADJUSTMENT -----	1	
-40	1414104-2	CLAMP -----	1	
-41	MS20392-1C15 MS24665-132	PIN ----- PIN-COTTER -----	2 2	
-42	1414116-1	SPRING-SEAT ADJUSTMENT -----	1	
-43	AN960C416L	WASHER -----	1	
-44	NAS561-2-12	PIN -----	1	
-45	1414104-8	BRACKET-SEAT ADJUSTMENT -----	1	
-46	S1957-2	ASH RECEIVER-SEAT BACK -----	1	

CONTINUED ON NEXT PAGE

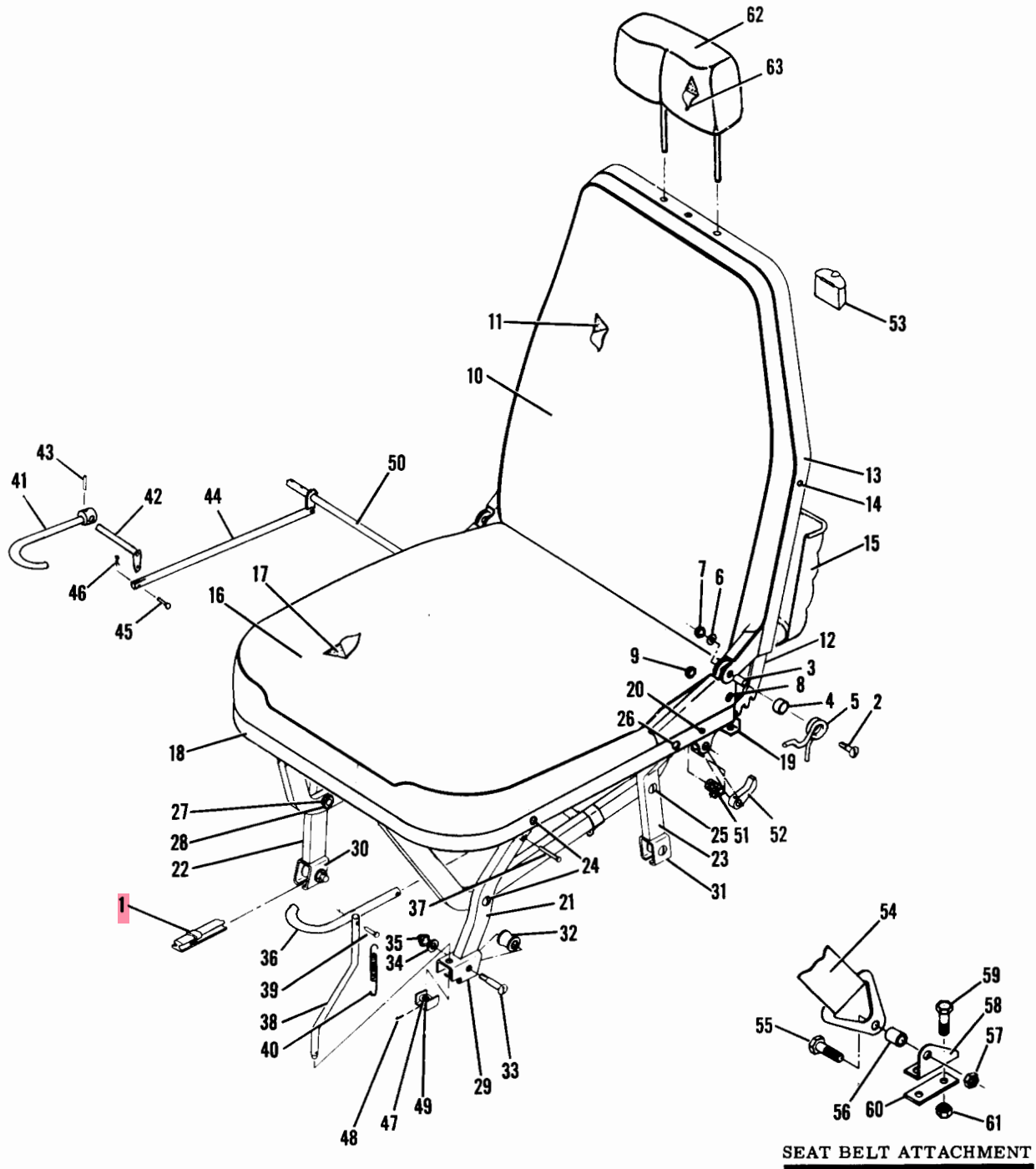
FIGURE AND INDEX NO.	PART NUMBER	DESCRIPTION							UNITS PER ASSY	USABLE ON CODE
		1	2	3	4	5	6	7		
49 -47	0710312-2	HANDLE-RECLINING ADJUSTMENT -----							1	
-48	1414104-1	TUBE-SEAT ADJUSTMENT TORQUE -----							1	
-49	1414231-1	PAWL-SEAT ADJUSTMENT -----							2	B
	1414231-3	PAWL-SEAT ADJUSTMENT -----							2	E
	1414231-4	PAWL-SEAT ADJUSTMENT -----							2	F
-50	1414107-1	SPRING-SEAT ADJUSTMENT -----							1	
-51	NAS561C3-10	PIN -----							3	
-51A	AN23-19A	BOLT HANDLE STOP -----							1	
-51B	NAS43HT3-16	SPACER HANDLE STOP -----							1	
	MS21044N3	NUT HANDLE STOP -----							1	
-52	S1746B2	BELT ASSEMBLY-FRONT SEAT BLACK -----							2	D
	S1746D2	BELT ASSEMBLY-FRONT SEAT TAN -----							2	G
	S1746J2	BELT ASSEMBLY-FRONT SEAT RED -----							2	G
	S1746K2	BELT ASSEMBLY-FRONT SEAT AVACADO -----							2	G
	S1746M2	BELT ASSEMBLY-FRONT SEAT BLUE -----							2	G
		ATTACHING PARTS								
-53	AN4-6A	BOLT -----							2	
-54	NAS43HT4-22	SPACER -----							2	
-55	NAS679A4	NUT -----							2	
		-----*								
-56	0510205-1	FITTING-SEAT BELT INBOARD LH & OUTBOARD RH -----							2	
	0510205-2	FITTING-SEAT BELT OUTBOARD LH & INBOARD RH -----							2	
		ATTACHING PARTS								
-57	AN3-4A	BOLT -----							2	
-58	0710632-1	PLATE -----							1	
-59	MS21044N3	NUT -----							2	
		-----*								
	1414252-1	HEADREST ASSEMBLY -----							2	
-60	1414252-7	CUSHION-HEADREST -----							1	
-61	1414252-6	COVER-HEADREST -----							1	
<p>NOTE. #THIS PART MUST HAVE A SECOND DASH NUMBER ADDED TO DENOTE COLOR. REFER TO HOW TO ORDER UPHOLSTERED PARTS-PAGE XII.</p> <p>NOTE. #THIS PART MUST HAVE A SECOND DASH NUMBER ADDED TO DENOTE COLOR. REFER TO HOW TO ORDER INTERIOR PARTS-PAGE XIII.</p> <p>A---182 SERIAL 18254424 THRU 18258505  A182 SERIAL A182-0001 THRU A182-0096</p> <p>B---182 SERIAL 18254424 THRU 18254747</p> <p>C---182 SERIAL 18254748 THRU 18258505  A182 SERIAL A182-0001 THRU A182-0096</p> <p>D---182 SERIAL 18254424 THRU 18257625  A182 SERIAL A182-0001 THRU A182-0056</p> <p>E---182 SERIAL 18254748 THRU 18256738</p> <p>F---182 SERIAL 18256739 THRU 18258505  A182 SERIAL A182-0001 THRU A182-0096</p> <p>G---182 SERIAL 18257626 THRU 18258505  A182 SERIAL A182-0057 THRU A182-0096</p>										



FIGURE AND INDEX NO.	PART NUMBER	DESCRIPTION							UNITS PER ASSY	USABLE ON CODE
		1	2	3	4	5	6	7		
49A-		PILOT & CO-PILOT SEAT INSTALLATION -----							NP	A
	0700678-22	#							2	B
	1214051-1	#							2	D
	1214051-5	#							2	E
- 1	0713074-1								2	
	MS20392-1C21								2	
	MS24665-151								2	
	0700678-200	#							1	B
	1214051-200	#							1	D
	1214051-202	#							1	E
- 2	AN23-19A								2	
- 3	1414104-4								2	
- 4	0711668-1								2	
- 5	0711667-1								2	
	NAS43HT3-12								2	
- 6	AN960-10L								2	
- 7	S1914-8								2	
- 8	AN507-832R14								2	
- 9	NAS679A08								2	
-10	0700678-9	#							1	B
	1214050-3	#							1	D
	1514051-6	#							1	E
-11	1414100-9								1	B
	1214050-5								1	D
-12	1414230-1								2	
-13	1414110-1	#							1	B
	0514055-1	#							1	D
	0514055-11	#							1	E
-14	S102128-6C								3	
-15	1414110-3	#							1	
	0700678-202	#							1	B
	1214051-201	#							1	D
	1214051-203	#							1	E
-16	0700678-10	#							1	B
	1214051-2	#							1	D
	1214051-7	#							1	E
-17	1414100-8								1	B
	1214051-3								1	C
-18	1414217-2								1	B
	0514058-1								1	C
-19	1414217-3								1	
-20	AN23-15A								2	
	MS21044N3								2	
-21	1414103-2								1	
-22	1414103-45								1	
-23	1414103-6								2	
-24	AN24-13A								2	
-25	AN24-13A								1	
-26	AN24-16A								1	
-27	AN936A416								2	
	AN936A616								2	
-28	1414112-1								2	
-29	1414104-39								1	
-30	1414104-40								1	
-31	1414104-41								1	
	1414104-42								1	
-32	1414100-212								4	
-33	AN23-19A								1	
-34	AN960-10L								1	
-35	S1914-8								1	
-36	1200504-1								1	
-37	MS20392-2C43								1	
	MS24665-132								1	

CONTINUED ON NEXT PAGE

Seat (Cont)

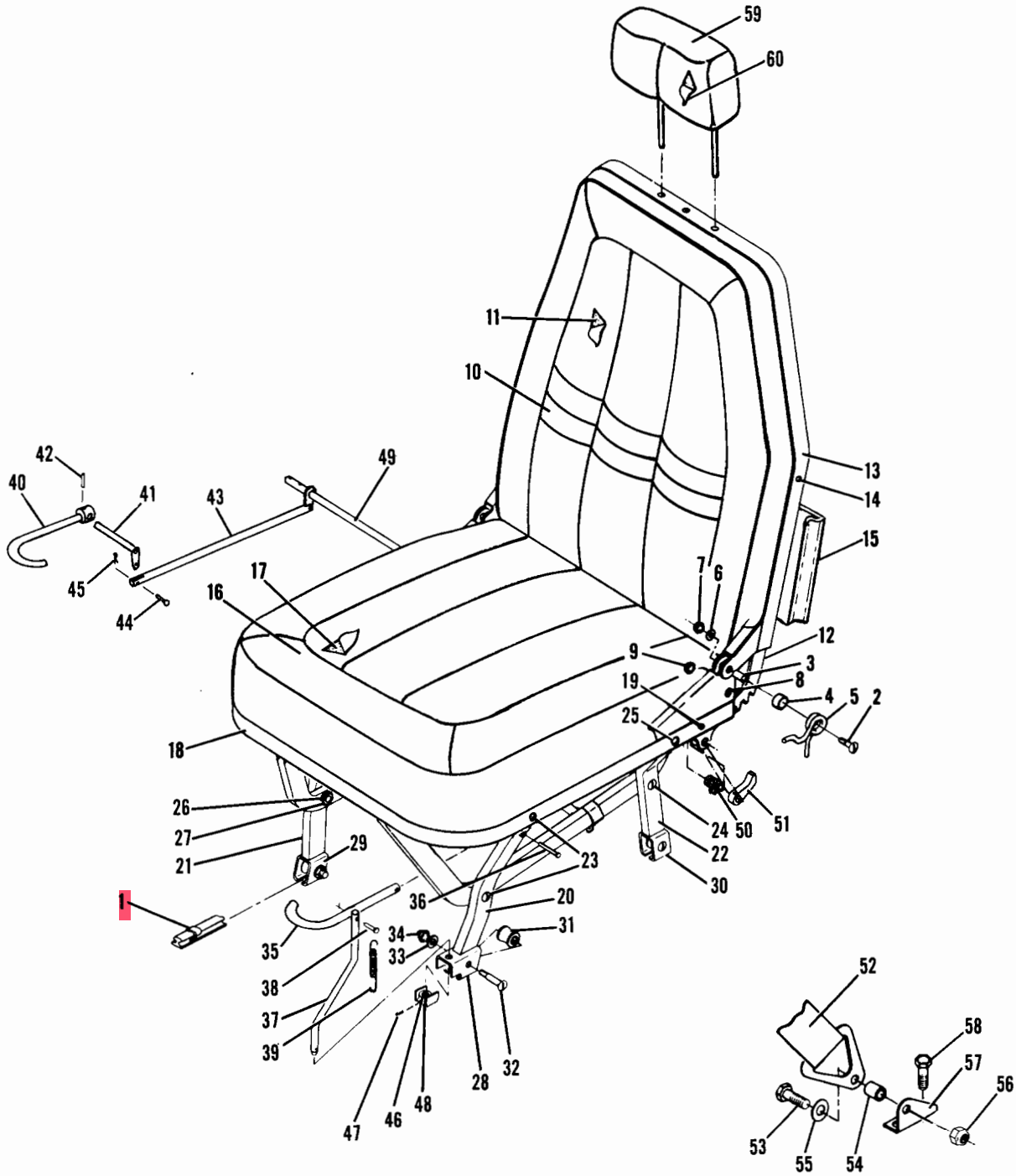


**182 SERIAL 18258506 THRU 18260825**

Figure 49A. Pilot & Co-Pilot Seat Installation

FIGURE AND INDEX NO.	PART NUMBER	DESCRIPTION							UNITS PER ASSY	USABLE ON CODE
		1	2	3	4	5	6	7		
49A-38	1200505-1	PIN-SEAT ADJUSTMENT ----- ATTACHING PARTS -----							1	
-39	MS20392-1C21	PIN -----							1	
	MS24665-132	PIN-COTTER -----							1	
-40	1414116-1	SPRING-SEAT ADJUSTMENT ----- -----*							1	
-41	1200504-3	HANDLE ASSY-RECLINING ADJUSTMENT -----							1	
-42	1200503-1	ARM ASSY-SEAT BACK ADJUSTMENT ----- ATTACHING PARTS -----							1	
-43	NAS561-3-8	PIN ----- -----*							1	
-44	1514223-28	LINK-SEAT BACK ADJUSTMENT -----							1	
-45	MS20392-1C9	PIN -----							2	
-46	MS24665-132	PIN-COTTER -----							2	
-47	AN960C416L	WASHER -----							1	
-48	NAS561-2-12	PIN -----							1	
-49	1414104-8	BRACKET-SEAT ADJUSTMENT -----							1	
-50	1414223-34	TUBE ASSY-SEAT ADJUSTMENT TORQUE -----							1	
-51	1414107-1	SPRING-SEAT ADJUSTMENT -----							1	
-52	1414231-4	PAWL -----							2	B
	0514043-1	PAWL -----							2	C
	NAS561C3-10	PIN -----							2	
-53	S1957-2	ASH RECEIVER-SEAT BACK -----							1	
-54	S1746D2	BELT ASSEMBLY-FRONT SEAT TAN -----							2	B
	S1746J2	BELT ASSEMBLY-FRONT SEAT APPLE RED -----							2	B
	S1746M2	BELT ASSEMBLY-FRONT SEAT BLUE -----							2	B
	S1746K2	BELT ASSEMBLY-FRONT SEAT AVACADO -----							2	B
	S1746T2	BELT ASSEMBLY-FRONT SEAT MARIGOLD -----							2	D
	S1746V2	BELT ASSEMBLY-FRONT SEAT OLIVE -----							2	D
	S1746W2	BELT ASSEMBLY-FRONT SEAT BROWN -----							2	D
	S1746Y2	BELT ASSEMBLY-FRONT SEAT BLUE -----							2	D
	S2070W103	%*	BELT ASSEMBLY-FRONT SEAT BROWN -----					2	E	
	S2070H103	%*	BELT ASSEMBLY-FRONT SEAT BLUE -----					2	E	
	S2070F103	%*	BELT ASSEMBLY-FRONT SEAT RED -----					2	E	
	S2070G103	%*	BELT ASSEMBLY-FRONT SEAT GREEN -----					2	E	
	S2070B103	%*	BELT ASSEMBLY-FRONT SEAT BLACK -----					2	E	
		ATTACHING PARTS -----								
-55	AN4-5A	BOLT -----							2	
-56	NAS43HT4-20	SPACER -----							2	
-57	NAS679A4	NUT ----- -----*							2	
-58	0510205-1	FITTING-SEAT BELT INBOARD LH & OUTBOARD RH -----							2	
	0510205-2	FITTING-SEAT BELT OUTBOARD LH & INBOARD RH ----- ATTACHING PARTS -----							2	
-59	AN3-4A	BOLT -----							2	
-60	0710632-1	PLATE -----							1	
-61	MS21044N3	NUT ----- -----*							2	
-62	1714040-1	HEADREST ASSEMBLY -----							2	B
	1714040-5	#	HEADREST ASSEMBLY SKYLANE ONLY -----					2	B	
	0514048-2	#	HEADREST ASSEMBLY -----					2	C	
-63	1714040-2	COVER-HEADREST -----							1	B
	1714040-6	#	COVER-HEADREST SKYLANE -----					1	B	
	0514048-10	#	COVER-HEADREST -----					1	C	
<p>NOTE. #THIS PART MUST HAVE A SECOND DASH NUMBER ADDED TO DENOTE COLOR. REFER TO HOW TO ORDER UPHOLSTERED PARTS-PAGE XII.</p> <p>NOTE. #THIS PART MUST HAVE A SECOND DASH NUMBER ADDED TO DENOTE COLOR. REFER TO HOW TO ORDER INTERIOR PARTS-PAGE XIII.</p> <p>NOTE. *SEE FIGURE 56 FOR SHOULDER HARNESS INSTL.</p> <p>NOTE. %WHEN ORDERING SEAT BELTS FOR AUSTRALIAN USE ADD VH TO PART NUMBER. EXAMPLE-S2070W103VH.</p> <p>A---182 SERIAL 18258506 THRU 18260825 A182 SERIAL A182-0097 &amp; ON</p> <p>B---182 SERIAL 18258506 THRU 18260055 A182 SERIAL A182-0097 THRU A182-0116</p> <p>C---182 SERIAL 18260056 THRU 18260825 A182 SERIAL A182-0117 &amp; ON</p> <p>D---182 SERIAL 18260056 THRU 18260445 A182 SERIAL A182-0117 &amp; ON</p> <p>E---182 SERIAL 18260446 THRU 18260825</p>										

Front Seat (Cont)



**SEAT BELT ATTACHMENT**

**182 SERIAL 18260826 THRU 18261425**

Figure 49B. Pilot & Co-Pilot Seat Installation

FIGURE AND INDEX NO.	PART NUMBER	DESCRIPTION	UNITS PER ASSY	USABLE ON CODE
498-	0714004-3	PILOT & CO-PILOT SEAT INSTALLATION ----- SEAT ASSEMBLY-PILOT & CO-PILOT ----- ATTACHING PARTS	NP 2	A
- 1	0713074-1 MS20392-1C21 MS24665-151	STOP-SEAT ----- PIN-CLEVIS ----- PIN-COTTER -----	1 1 1	
		BACK ASSEMBLY-UPHOLSTERED SEAT ----- ATTACHING PARTS	NP	
- 2	AN23-19A	BOLT -----	2	
- 3	1414104-4	BUSHING -----	2	
- 4	0711668-1	BUSHING -----	2	
- 5	0711667-1	SPRING -----	2	
	NAS43HT3-12	SPACER -----	2	
- 6	AN960-10L	WASHER -----	2	
- 7	S1914-8	NUT EN -----	2	
- 8	AN507-832R14	SCREW -----	2	
- 9	NAS679A08	NUT -----	2	
		-----*		
-10	0714004-7	COVER ASSEMBLY-SEAT BACK -----	1	
-11	0500210-155	CUSHION-SEAT BACK -----	1	
-12	1414230-1	CAM-SEAT BACK RECLINE -----	1	
-13	0514076-1	TRIM ASSEMBLY-SEAT BACK ----- ATTACHING PARTS	1	
-14	S1021A4-6	SCREW -----	5	
		-----*		
-15	1214062-5	POCKET ASSEMBLY-MAGAZINE ----- ATTACHING PARTS	1	
	S1021A4-6	SCREW -----	2	
		-----*		
		BOTTOM ASSEMBLY-UPHOLSTERED SEAT -----	NP	
-16	0714004-6	COVER ASSEMBLY-SEAT BOTTOM -----	1	
-17	0514075-2	CUSHION ASSEMBLY-SEAT BOTTOM -----	1	
-18	0514058-1	RETAINER-SEAT BOTTOM -----	1	
-19	AN23-15A	BOLT-SEAT BACK STOP -----	2	
	MS20364-1032	NUT -----	2	
-20	1414103-2	LEG ASSEMBLY-FWD LH SEAT -----	1	
-21	1414103-45	LEG ASSEMBLY-FWD RH SEAT -----	1	
-22	1414103-6	LEG-AFT SEAT ----- ATTACHING PARTS	2	
-23	AN24-13A	BOLT-FORWARD LEG -----	2	
-24	AN24-13A	BOLT-AFT LEG -----	1	
-25	AN24-16A	BOLT-AFT LEG -----	1	
-26	AN936A416	WASHER UNDER BOLT HEAD -----	2	
	AN936A616	WASHER UNDER NUT -----	2	
-27	1414112-1	NUT -----	2	
		-----*		
-28	1414104-39	HOUSING-SEAT ROLLER FORWARD LH -----	1	
-29	1414104-40	HOUSING-SEAT ROLLER FORWARD RH -----	1	
-30	1414104-41	HOUSING-SEAT ROLLER AFT LH -----	1	
	1414104-42	HOUSING-SEAT ROLLER AFT RH -----	1	
-31	1414100-212	KIT-SEAT ROLLER ----- ATTACHING PARTS	4	
-32	AN23-19A	BOLT -----	1	
-33	AN960-10L	WASHER -----	1	
-34	S1914-8	NUT -----	1	
		-----*		
-35	1200504-1	HANDLE-FORE & AFT SEAT ADJUSTMENT ----- ATTACHING PARTS	1	
-36	MS20392-2C43 MS24665-132	PIN ----- PIN-COTTER -----	1 1	
		-----*		

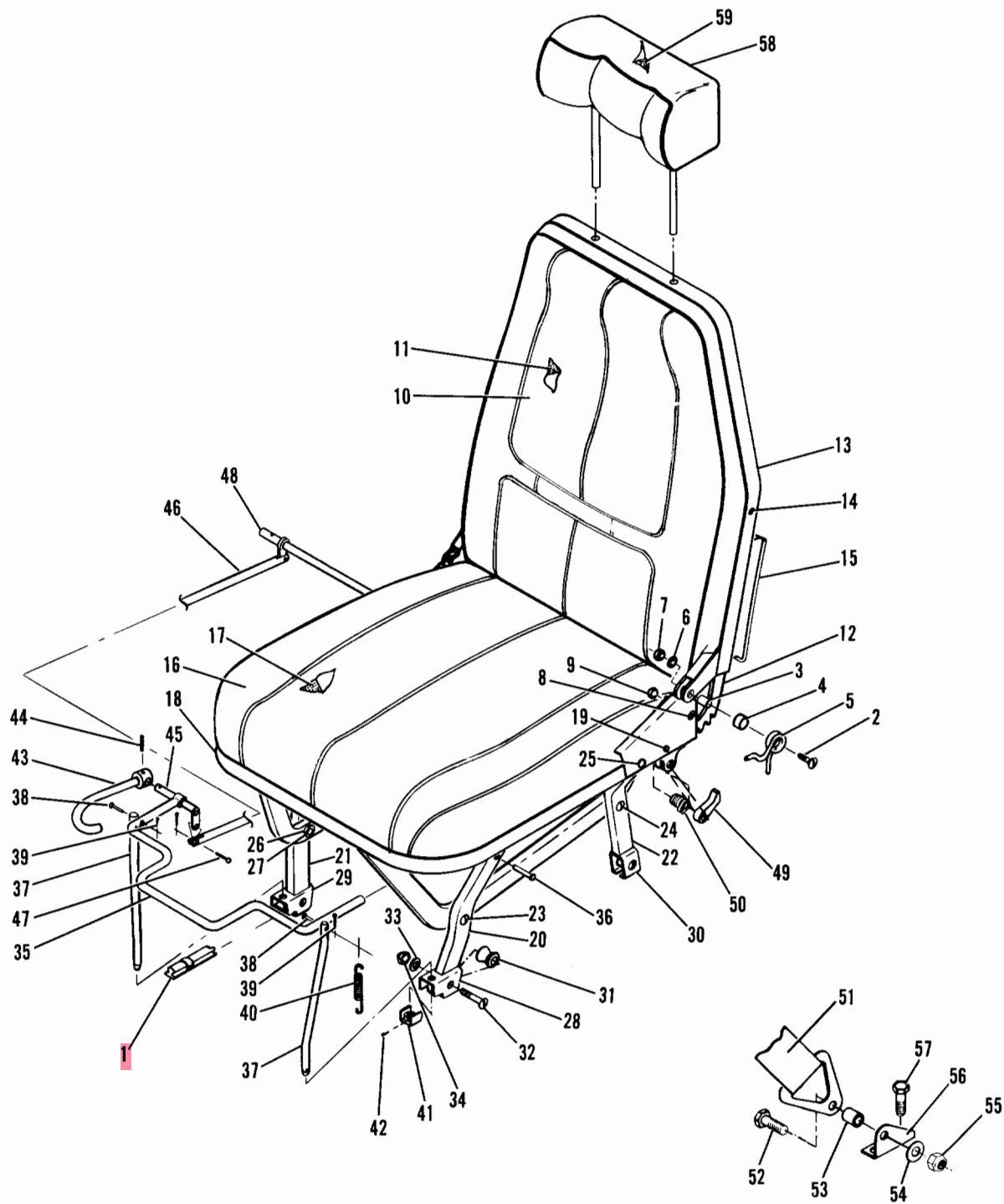
CONTINUED ON NEXT PAGE



FIGURE AND INDEX NO.	PART NUMBER	DESCRIPTION	UNITS PER ASSY	USABLE ON CODE
49C-		<b>1 2 3 4 5 6 7</b>		
	0714008-3 #	PILOT & CO-PILOT SEAT INSTL STANDARD ----- SEAT ASSEMBLY-PILOT & CO-PILOT ----- ATTACHING PARTS -----	NP 1	A
- 1	0713074-1 MS20392-1C21 MS24665-151	STOP-SEAT ----- PIN-CLEVIS ----- PIN-COTTER ----- -----*	2 2 2	
		BACK ASSEMBLY-UPHOLSTERED SEAT ----- ATTACHING PARTS -----	NP	
- 2	AN23-19A	BOLT -----	2	
- 3	1414104-4	BUSHING -----	2	
- 4	0711668-1	BUSHING -----	2	
- 5	0711667-1 NAS43HT3-12	SPRING ----- SPACER -----	2 2	
- 6	AN960-10L	WASHER -----	2	
- 7	S1914-8	NUT EN -----	2	
- 8	AN507-832R14	SCREW -----	2	
- 9	NAS679A08	NUT ----- -----*	2	
-10	0714008-7 #	COVER ASSEMBLY-SEAT BACK -----	1	
-11	0714008-10	CUSHION ASSY-SEAT BACK -----	1	
-12	1414230-1	CAM-SEAT BACK RECLINE -----	1	
-13	0514076-1 #	TRIM ASSY-SEAT BACK ----- ATTACHING PARTS -----	1	
-14	S1021A4-6	SCREW ----- -----*	5	
-15	1214062-5 #	POCKET ASSY-MAGAZINE ----- ATTACHING PARTS -----	1	
	S1021A4-6	SCREW ----- -----*	2	
		BOTTOM ASSEMBLY-UPHOLSTERED SEAT -----	NP	
-16	0714008-6 #	COVER ASSY-SEAT BOTTOM -----	1	
-17	0514075-2	CUSHION ASSY-SEAT BOTTOM -----	1	
-18	0514058-1 #	RETAINER-SEAT BOTTOM ----- ATTACHING PARTS -----	1	
	S1021A4-6	SCREW ----- -----*	5	
-19	AN23-15A MS20364-1032	BOLT ----- NUT -----	2 2	
-20	1414103-2	LEG ASSY-FWD LH -----	1	
-21	1414103-45	LEG ASSY-FWD RH -----	1	
-22	1414103-6	LEG-AFT SEAT ----- ATTACHING PARTS -----	2	
-23	AN24-13A	BOLT-FORWARD LEG -----	2	
-24	AN24-13A	BOLT-AFT LEG LOWER -----	1	
-25	AN24-16A	BOLT-AFT LEG UPPER -----	1	
-26	AN936A416 AN936A616	WASHER UNDER BOLT HEAD ----- WASHER UNDER NUT -----	2 2	
-27	1414112-1	NUT ----- -----*	2	
-28	1414104-39	HOUSING-SEAT ROLLER FWD LH -----	1	
-29	1414104-61	HOUSING-SEAT ROLLER FWD RH -----	1	
-30	1414104-41 1414104-42	HOUSING-SEAT ROLLER AFT LH ----- HOUSING-SEAT ROLLER AFT RH -----	1 1	
-31	1414100-212	KIT-SEAT ROLLER ----- ATTACHING PARTS -----	4	
-32	AN23-19A	BOLT -----	1	
-33	AN960-10L	WASHER -----	1	
-34	S1914-8	NUT ----- -----*	1	
-35	0514052-1	HANDLE ASSY-SEAT ADJUST ----- ATTACHING PARTS -----	1	
-36	MS20392-2C43 MS24665-132	PIN ----- PIN-COTTER ----- -----*	1 1	

CONTINUED ON NEXT PAGE

Front Seat (Cont)



**SEAT BELT ATTACHMENT**

**182 SERIAL 18261426 THRU 18262465**

Figure 49C. Pilot & Co-Pilot Seat Installation - Standard

FIGURE AND INDEX NO.	PART NUMBER	DESCRIPTION	UNITS PER ASSY	USABLE ON CODE
49C-37	0514066-1	PIN-SEAT ADJUST ----- ATTACHING PARTS -----	2	
-38	MS20392-1C23	PIN -----	1	
-39	MS24665-132	PIN-COTTER ----- -----*	1	
-40	1414116-1	SPRING-SEAT ADJUST -----	1	
-41	1414104-8	BRACKET -----	2	
-42	NAS561-2-12	ROLL PIN -----	2	
-43	1200504-3	HANDLE ASSY-RECLINING ADJUSTMENT ----- ATTACHING PARTS -----	1	
-44	NAS561-3-8	ROLL PIN ----- -----*	1	
-45	1200503-1	ARM ASSY-SEAT BACK ADJUST -----	1	
-46	1514223-28	LINK-SEAT BACK ADJUST ----- ATTACHING PARTS -----	1	
-47	MS20392-1C9 MS24665-132	PIN ----- PIN-COTTER ----- -----*	2 2	
-48	1414223-34	TUBE ASSY-TORQUE -----	1	
-49	0514043-1	PAWL-SEAT BACK ADJUST REPLACE IN PAIRS ONLY ----- ATTACHING PARTS -----	2	
	NAS561C3-10	ROLL PIN ----- -----*	1	
-50	1414107-1	SPRING -----	1	
-51	S2070W103 %* S2070U103 %* S2070AA103 %* S2070Z103 %* S2070B103 %*	BELT ASSY-FRONT SEAT GOLD ----- BELT ASSY-FRONT SEAT BLUE ----- BELT ASSY-FRONT SEAT OLIVE ----- BELT ASSY-FRONT SEAT RED ----- BELT ASSY-FRONT SEAT BLACK ----- ATTACHING PARTS -----	2 2 2 2 2	
-52	AN4-5A	BOLT -----	2	
-53	NAS43HT4-12	SPACER -----	2	
-54	AN960-416L	WASHER -----	2	
-55	NAS679A4	NUT ----- -----*	2	
-56	0510205-5 0510205-6	FITTING-SEAT BELT INBD LH & OUTBD RH ----- FITTING-SEAT BELT OUTBD LH & INBD RH ----- ATTACHING PARTS -----	2 2	
-57	AN3-4A	BOLT ----- -----*	2	
-58	0514048-2 #	HEADREST ASSY -----	2	
-59	0514048-10 #	COVER-HEADREST -----	1	
<p>NOTE. #THIS PART MUST HAVE A SECOND DASH NUMBER ADDED TO DENOTE COLOR. REFER TO HOW TO ORDER UPHOLSTERED PARTS-PAGE XII.</p> <p>NOTE. #THIS PART MUST HAVE A SECOND DASH NUMBER ADDED TO DENOTE COLOR. REFER TO HOW TO ORDER INTERIOR PARTS-PAGE XIII.</p> <p>NOTE. *SEE FIGURE 56 FOR SHOULDER HARNESS INSTL.</p> <p>NOTE. %WHEN ORDERING SEAT BELTS FOR AUSTRALIAN USE, ADD VH TO PART NUMBER. EXAMBLE S2070W103VH</p> <p>A---182 SERIAL 18261426 THRU 18262465</p>				